

P. PORTO



PUBLIC HIGHER EDUCATION INSTITUTION



1
Welcome



4
Researching



6
**Apply
with us**

P.P.O

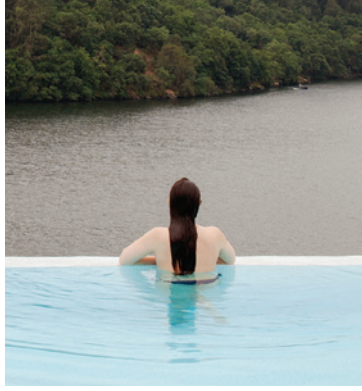
8
Enjoying



9
**Our
facilities**

2

Our schools



3

Other facilities

5

Worldwide



ORTO



7

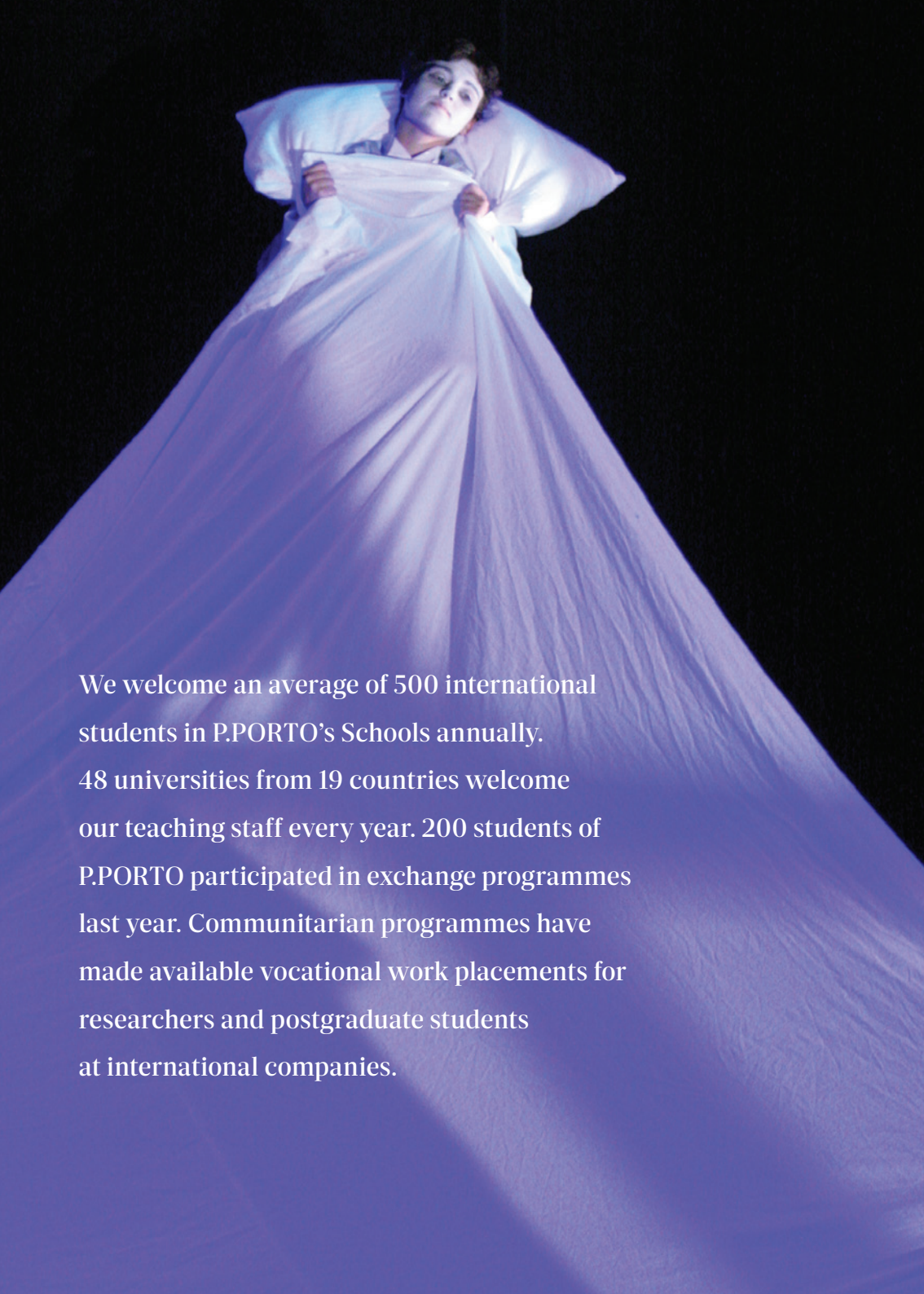
Student support



10

way of life





We welcome an average of 500 international students in P.PORTO's Schools annually. 48 universities from 19 countries welcome our teaching staff every year. 200 students of P.PORTO participated in exchange programmes last year. Communitarian programmes have made available vocational work placements for researchers and postgraduate students at international companies.

1 Welcome to P.PORTO

THINK GLOBAL

P.PORTO is a public higher education institution aiming at excellence, but also at becoming a centre for ideas and results applicable to several areas that will stand out for their difference. We are a dynamo of cultural change, both nationally and internationally. We try to meet current demands, building bridges between academia, the world of work and civil society.

We value the creation of technologically innovative and pragmatic educational environments, thus promoting a creative and challenging routine.

We are a global, challenging and open community, the result of cooperation programmes with over 700 institutions in four continents. We participate permanently in international research and education programmes.

*We decide the present.
We anticipate the future*



58

Undergraduate Degrees

18.000

Students

50

Masters' Degrees

2

Our Schools

An educational complex with modern equipment, laboratories and research centres located in 3 Campuses that fosters a high quality and varied educational offer. It is essentially vocational in character for the Arts, Business Studies, Education, Engineering, Hospitality and Tourism, Media and Design, Health, Technology and Management.





One of the top schools of technology in Portugal, ISEP has been pioneering education and research in Engineering since 1852.

Our goal is to contribute to sustainable development, by creating and transmitting applied knowledge. We believe our students, as future engineers, can produce creative solutions for present or upcoming challenges, thus becoming agents of global progress.

ISEP offers a wide range of programmes in different fields of Engineering. With over 6500 students, we believe each one is unique and has the ability to excel. Our job is simply to channel their potential into entrepreneurship, team work, out-of-the-box thinking and technical expertise, key competences for a successful international career.

The School is also a trademark of Porto. This modern European city, known for its beauty, booming cultural agenda and strong traditional roots, is also at the centre of



Portuguese academic life. Porto is also known for its friendly and cosmopolitan environment, which helps explain the large number of international students.

Along with renowned institutions, such as MIT (Massachusetts Institute of Technology), ISEP is a member of the international consortium CDIO (Conceive - Design - Implement - Operate) and has more than a hundred partnerships within the European Space of Higher Education.

The true recognition of its excellence is also translated into the European quality certification OE+EUR-ACE, the main European quality reference in engineering education, a process that is led in Portugal by the Portuguese Chamber of Engineers, of which this School is a honorary member. Studying at ISEP is an invitation to interpret and solve tomorrow's challenges.

Join us and spark your creativity.



ENGINEERING

**INSTITUTO
SUPERIOR
DE ENGENHARIA
DO PORTO**

ISEP is the
Engineering
School with
more certified
programmes
in the Iberian
Peninsula.



UNDERGRADUATE DEGREES

Bioresources
Biomedical Engineering
Civil Engineering
Electrotechnical and Computational Engineering
Electrotechnical Engineering - Electrical Power Systems
Geotechnical Engineering and Geoenvironment
Industrial Management and Engineering
Computer Engineering
Mechanical Engineering
 Car Mechanics
Chemical Engineering
Systems Engineering

MASTERS' DEGREES

Sustainable Energies
Civil Engineering
Medical Instrumentation and Computational Engineering
Electrotechnical and Computational Engineering
Electrotechnical Engineering - Electrical Power Systems
Industrial Management and Engineering
Geotechnical Engineering and Geoenvironment
Computer Engineering
Metrology and Instrumentation Engineering
Mechanical Engineering
Chemical Engineering
Mathematics Applied to Engineering and to Finances

POST-GRADUATE PROGRAMMES

Assessment and Analysis of Real Estate Investment
Computer Assisted Structural Calculus
Applied Mobile Computing - Android
Energy Efficiency and Rational Use of Electrical Energy
Business Applications Engineering
Computer Engineering Applied to Health Services
Structural Diagnostic Tests
Management and Maintenance of Lifting Gear - Lifts
Informatics in Education
Advanced Machining
Electrical Facilities Project
Urban Regeneration
Security Systems, Technical Management and Home Automation
Integrated Systems for Security, Environment
 and Quality Management
Technician for Advanced Inspection of Structures
Technician for Inspection of Structures
Educational Support Technologies



The Porto Accounting and Business School is located in Campus 1, and offers its 4,000-strong student population a range of innovative undergraduate and graduate programs in Accounting, International Commerce, Marketing, Business Communication, Tourism and Hospitality Management, Administrative Assistance and Translation.

It is a national reference as far as business sciences are concerned, namely through the courses of Enterprise Simulation (ES) which, besides exempting students from the internship required to access the Chamber of Chartered Accountants, aims to provide a demanding, complex, universal and technologically advanced business environment.



At ISCAP, we take both the academic and personal needs of our international students and lecturers very seriously, and we continually strive to provide a dynamic and stimulating teaching and learning environment.

The number of outgoing and incoming students (both Erasmus and free-mover) has increased significantly over the years. Besides, during our International Weeks we welcome visiting lecturers and our partners' representatives, which has contributed to the "Internationalisation at Home" process and the establishment of enduring academic and scientific bonds amongst lecturers and researchers.

We look forward to meeting you.



BUSINESS SCIENCES

**INSTITUTO
SUPERIOR
DE CONTABILIDADE
E ADMINISTRAÇÃO
DO PORTO**

ISCAP prepares
innovative leaders
who improve
the world and
generate versatile
ideas and
solutions



UNDERGRADUATE DEGREES

Administrative Assistance and Translation
Library and Information Sciences and Technologies
International Trade
Business Communication
Accounting and Administration
Business Innovation and Creativity
Marketing
Human Resources

MASTERS' DEGREES

Administration Assistance
Auditing
Finance and Accounting
Entrepreneurship and Internationalisation
Corporate Finances
Organisational Management*
Company Management
Management and Human Resources Development
Business Information
Logistics*
Digital Marketing
Specialised Interpreting and Translation Administration

POSTGRADUATE PROGRAMMES

Russian Cultural Studies
Management of Business Information Systems
Information Technology and Management for Health Services
Technologies for Communication and Business Innovation **
Computer Assisted Translation

SPECIALISATION COURSES

Accounting and Taxation
Financial Management

* This Master's is taught jointly by the members of Associação de Politécnicos do Norte
**(B-Learning System)



The School of Education of P.PORTO offers a range of undergraduate and postgraduate programmes, including 12 master degrees, and specialisation courses, mainly in teacher education but also in other convergent areas. A joint doctoral degree is currently being prepared in cooperation with the University of Santiago de Compostela (Spain).

Its mission focuses on articulating the dimensions of education, research and service to the Community by pursuing excellence in civic and professional education at a scientific, technical, artistic, pedagogical and ethical level, with references to initial and continuing education, research and internationalisation.

ESE has been an active participant in EU programs since 1986 and is involved in all aspects of teacher education, having long established links with schools and HE institutions, both regionally and internationally.



There are many reasons for choosing ESE. We offer high quality and accessible education and a stimulating teaching-learning environment that values experience in professional contexts, providing the students with diverse quality infrastructures.

It is also a way to learn Portuguese, the fifth most spoken European language in the world and a linguistic gateway to Africa and Brazil. Besides that, Portugal is well known for its lifestyle and hospitality, it is a country full of history, architecture, sports and cultural activities, and amazing landscapes.



EDUCATION

**ESCOLA
SUPERIOR
DE EDUCAÇÃO**

ESE is where
education, culture,
sports and citizenship
converge in a single
space of training and
knowledge



UNDERGRADUATE DEGREES

Visual Arts and Artistic Technologies
Sports Sciences
Primary Education
Music Education
Social Education
Heritage Management
Foreign Cultures and Languages
Translation and Interpreting in Portuguese Sign Language

VOCATIONAL MASTERS' DEGREES

Didactics for Natural Sciences and Mathematics
Preschool Education
Preschool Education and Primary Education
Teaching Mathematics in Primary Education and Teaching Natural Sciences in Secondary Education
Primary Education and Teaching Portuguese Language, Portuguese History and Geography in Secondary Education
Teaching English Language in Primary Education
Teaching Portuguese and English Languages in Secondary Education
Teaching Musical Education in Primary Education
Teaching Visual and Technological Education in Primary Education
Music Education*

SPECIALISED MASTERS' DEGREES

Education and Social Intervention
Special Education - Multiple Disabilities and Cognitive Deficits
Specialised Professional Studies in Education
Heritage, Arts and Cultural Tourism

PHD PROGRAMME

Education**

*In cooperation with the School of Performing Arts

**In Arrangement with the University of Santiago

The School of Music and the Performing Arts (ESMAE) is a national and international reference for higher education in arts programmes. Our educational and artistic reputation goes well beyond our regional and national boundaries.

Our programmes in Music and Performing Arts are demanding and meticulous and are set against a vocational background.

A postgraduate programme in Dance was created in 2016, in cooperation with Teatro Municipal do Porto and the support of the School of Education. This unique teaching model in Europe will give those enrolling in the degree the chance to learn from performers acting in one of Europe's main theatres. The School of Music and the Performing Arts boasts a highly reputable art education and a partnership network at the local, national and international levels.



This School is home to the Helena Sá e Costa Theatre and to the Café-Concerto (Cabaret) Francisco Beja, and apart from being a space for creating and experimenting, it is the venue for over 200 art events annually. Many of these are performed by the ESAME Symphony Orchestra, by the Portuguese Saxophone Orchestra, the Jazz Orchestra, among others.

Our exceptional practical skills coupled with intellectual and ethical dimensions distinguish us.



ARTS

—
**ESCOLA
SUPERIOR
DE MÚSICA,
ARTES
E ESPECTÁCULO**

Located in the
centre of Porto,
ESMAE has an
international
standing, and
offer customised
and cutting-edge
higher education
programmmes in
music and drama



UNDERGRADUATE DEGREES

Music

Voice

Composition

Instruments

Strings | Piano | Percussion | Woodwinds

Jazz

Ancient Music

Music Technology and Production

Drama

Acting

Scenography

Stage Direction and Production

Costume

Sound and Lighting

MASTERS' DEGREES

Composition and Music Theory

Music Teaching*

Music-Artistic Interpretation

Drama

POSTGRADUATE PROGRAMMES

Opera and Music-Drama Studies

Drama and Community

Orchestral Conducting

Dance

*In cooperation with the School of Education



The School of Management and Technology (ESTGF) is a thriving school that offers degrees in applied sciences with a particular focus on public service and regional development (social, technological, economic and cultural).

The Campus is located little over 20 km from Porto, at the heart of a triangle classified by UNESCO as World Heritage Sites, namely Porto, Guimarães and the Douro Valley. The Region has good accessibilities, such as motorways, railways and the Francisco Sá Carneiro International Airport.

The school invests in quality programs, the provision of R&D services, regional and international cooperation.



The School is housed in a completely refurbished traditional building that delights visitors. The kind and warm hospitality of the city makes it easy and memorable to study at the School of Management and Technology.



MANAGEMENT AND TECHNOLOGY

**ESCOLA
SUPERIOR
DE TECNOLOGIA
E GESTÃO
DE FELGUEIRAS**

ESTGF articulates
higher education
with the business
world and is always
focused on students'
employability and
meeting regional
needs

UNDERGRADUATE DEGREES

Business Sciences
Computer Engineering
Environment and Workplace Safety
IT Security in Computer Networks
Management information Systems
Solicitorship
Wood Technologies

MASTERS' DEGREES

Computer Engineering
Management of Third Sector Organisations
Project Management
Business Internationalisation and Management
Integrated Management of Quality, Environment and Safety
Methods for Business Decision Making
Solicitorship

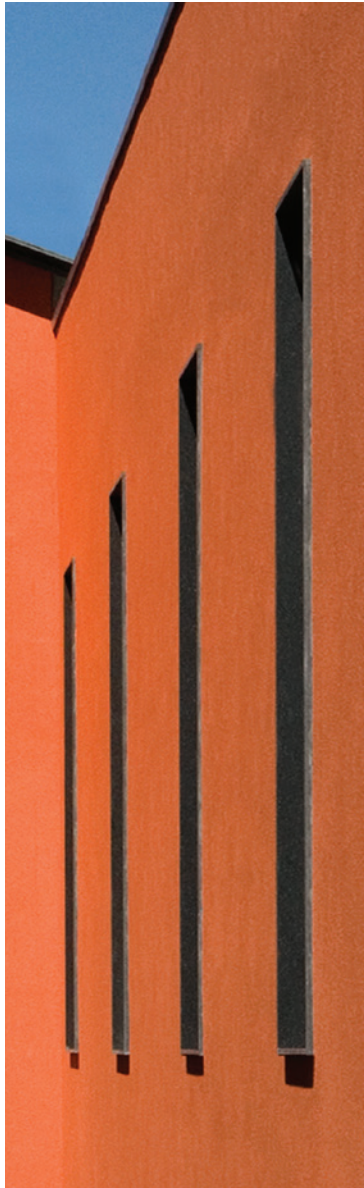
POSTGRADUATE PROGRAMMES

Fire Safety in Buildings





The School of Allied Health Technology is the biggest Portuguese higher education institution in health technologies. With its 2,200 students, 312 teaching staff members, 13 undergraduate degrees, seven masters' degrees and several continuing training courses, the School is the third biggest in P.PORTO.



We promote a diversified educational offer and a supportive environment for research and innovation activities. The high employability rate of our graduates and the international recognition of foreign employing institutions contribute to make this School one of the most applied to in the healthcare area.



HEALTH

**ESCOLA
SUPERIOR
DE TECNOLOGIA
DA SAÚDE
DO PORTO**

The most recent
addition to one of
Europe's strongest
health and science
hubs, ESTSP
leads the way in
Health Technology
Education



UNDERGRADUATE DEGREES

Audiology
Medical Biotechnology
Laboratory Medical Sciences
Pharmaceutics
Physical Therapy
Clinical Physiology
Medical Imaging and Radiotherapy
Orthoptics
Environmental Health
Speech Therapy
Occupational Therapy

MASTERS' DEGREES

Biochemistry for Healthcare
Applied | Clinical and Metabolic | Biotechnologia
Physical Therapy **SPECIALISATION COURSES**
Neurological | in Sports | Cardiopulmonary in the Community |
Orthopaedic Manual Therapy
Organisational Management - Management of Healthcare
Providers Services*
Health and Safety in Organisations
Occupational Therapy **SPECIALISATION COURSES**
Gerontology | Mental Health | Child and Adolescent
Physical Rehabilitation

POSTGRADUATE PROGRAMMES

Urodynamic Evaluation of the Lower Urinary Tract
Applied Biochemistry
Clinical and Metabolic Biochemistry
Biotechnology
Specialisation Course in Safety and Protection against Radiation
Physical Therapy in Health Promotion
Physical Therapy in Sports
Respiratory Physical Therapy in Respiratory failure
Chronic and Acute
Phytotherapy
Homeopathy
International in Social Entrepreneurship
Naturopathy
Radio-oncology

PHD

Advanced Biotechnology**

*This Master is the responsibility of the members of Associação de Politécnicos do Norte

**In Arrangement with the Universities of Vigo and Coruña

The School of Media and Design aims at becoming a national and international reference in education.

We stand for rigorous and demanding syllabi, based on technical knowledge and an artistic conceptualisation component under copyright.

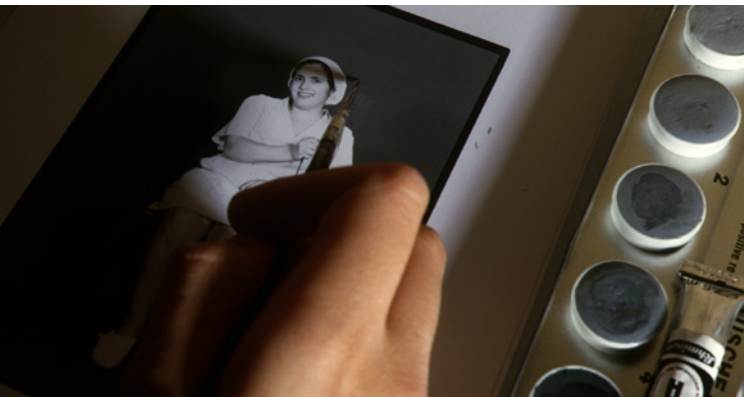
With a unique educational programme in the area and high rates of employability for its graduates, ESMAD has established partnerships and protocols with the most reputable European and South-American universities:

University of Central Lancashire, Nottingham Trent University, South Wales University, Universidade Aalto, Tallinn University of Technology, University of Santiago de Compostela, University of León, University of São Paulo, University of Fortaleza, among many others.



ESMAD has an Educational programme recognised in the audiovisual, multimedia and design areas, with strong international networks and high rates of employability.

Our syllabus are based on the most comprehensive and differentiated educational offers in Portugal in the areas of Design, Cinema, Photography, Multimedia and the Web.



MEDIA ARTS AND DESIGN

**ESCOLA
SUPERIOR
DE MEDIA ARTES
E DESIGN***

ESMAD degrees are
designed to make
uniquely creative
contributions to the
modern world



UNDERGRADUATE DEGREES

Design

Graphic Design and Advertising Major

Industrial Design Major

Audiovisual Communication Technology

Multimedia Communication Technology

Web Information Systems and Technologies

MASTERS' DEGREES

Design

Audiovisual Communication

Specialisation Course in Audiovisual Direction and Production

Specialisation Course in Photography and Documentary Film

POSTGRADUATE PROGRAMMES

Furniture Design



The School of Hospitality and Tourism strives to be a unique centre for educational excellence, both nationally and internationally. It comes first in top of mind awareness and endeavours to become the students' first choice for all educational programmes on offer

The School develops applied strategies for learning, researching, service provision and the relation with the surrounding communities, internationalisation and the creation of networks and partnerships.



Situated between the towns of Póvoa de Varzim and Vila do Conde, the School's facilities include a modern building, equipped with a library, study rooms, several labs for kitchen and restaurant activities, which include a training restaurant, a show-cooking kitchen, an accommodation lab, an auditorium and leisure and support areas for the students.

An example of the applied strategy in use is the advancement of the Porto School Hotel.

The first five-star school-hotel in Portugal is located in the Douro region and liaises with the Douro Royal Valley Hotel to create a hands-on training area with an innovative teaching/ learning methodology.



HOSPITALITY AND TOURISM

**ESCOLA
SUPERIOR
DE HOTELARIA
& TURISMO***

ESHT meets
existing demands
of a strongly
growing sector
with a five-star
offer

UNDERGRADUATE DEGREES

Management of Tourism Activities

Hotel Management

Catering and Restaurant Management **new**

MASTERS' DEGREES

Hotel Management

Sales and Marketing Major

Health and Wellness Industry Major

Tourism Management

POSTGRADUATE PROGRAMMES

Management of Healthcare Providers Services

Management of Tourism Operations in Rural Settings

3 Other facilities



PORTO SCHOOL HOTEL

The school you would love to live in

The Porto School Hotel has established itself as a unique and distinct option in the Hospitality and Tourism industry. The model has as its primary concern employability and, therefore, the learning process depends on the close association with the Douro Valley Hotel & SPA and is based on active and innovative methodologies.

The work placements scheduled for the fourth and last semester of the course should be emphasised as a unique opportunity for acquiring and developing practical skills while being integrated in the real labour market. The team of the Porto School Hotel has designed a training plan which will prepare you for the national and international challenges.

The Porto School Hotel meets strict quality requirements and ensures the adequacy of the curriculum to the needs of the market.

The programmes grant a specialisation diploma, based on the European Credit Transfer Systems (ECTS). It allows students to accumulate credits in case they want to pursue their academic career at undergraduate level

E portoschoolhotel@eseig.ipp.pt

T 255 070 900

PORTO DESIGN FACTORY

This is an experimental platform for the co-creation, co-development and acceleration of innovative ideas

Porto Design Factory is a clear reflection of P.PORTO's culture. This is where students from very distinct areas work cooperatively in innovative projects, with the aim of promoting entrepreneurship through an educational model based on problem-based learning.

This network makes it possible for students and teaching staff from different schools to exchange and share knowledge and cooperate in several projects. DFGN has offices in every continent, from Helsinki to Shanghai, from Melbourne to Santiago de Chile, Holland, Geneva or New York.

E portodesignfactory@sc.ipp.pt

T 225 571 020

PORTO EXECUTIVE ACADEMY

Porto Executive Academy is another catalyst in P.PORTO relation with the region's social and economic fabric.

Our bet is on a relevant position in the education of senior managers and members of executive boards, in executive in-company training, in the provision of consultancy services with added value and in applied scientific and technical research. We will thus assert ourselves as an expert skills

centre in cross-sectional knowledge areas, preparing managers to work successfully in small and medium-sized companies.

We train the best managers to set up the best companies. National and internationally

E armandosilva@sc.ipp.pt

T 225 571 000



The priority action axis of P.PORTO in R&D aims at generating knowledge to meet society's great challenges, whether they are of a local, regional or international nature.

*We think as a network,
we create as a network*

4

Researching at P.PORTO

Our researchers are involved in the latest findings and emerging trends. We head European projects such as 3P's, which researches into nanomaterials and biosensors used in cancer detection, and the P-SOCRATES project, which deals with real time critical systems for parallel computing. We also head large intercontinental projects, such as DREAM-GO (with the USA), which is on Intelligent Power Networks, and GMOSensor (with Brazil and Argentina), one of the biggest projects of the Marie-Curie programme in H2020, covering biosensors for the areas of Environment and Food. There is also VISIR+, another project with Brazil and Argentina, aimed at the consolidation of a Remote Laboratories network, and EKRUCAmI (with South Korea) for the area of Intelligent Environments. P.PORTO is also part of great national projects such as AAL4ALL, the central project of the Healthcare Cluster in Portugal.

It gathers 30 research groups from P.PORTO's eight School, which participate in multiple national and international R&D projects, thus obtaining significant recognition for their scientific production and dovetailing in the national and international scientific network.

Our culture combines leadership with partnership, convergence with diversity, competitiveness with cooperation.

The network, knowledge and information society thrive at P.PORTO and allow students, teachers and researchers to experience the comprehensiveness of resources available globally. Graduates are fully prepared to work in a multi-cultural context and to adapt to the constant change and innovation typical of the 21st century.

Input and Output programmes reach 700 institutions, 27 countries, in 5 continents. International cooperation has long been a priority in the institution's policy.

MAIN INTERNATIONAL RELATIONS OFFICE

The support structure to P.PORTO internationalisation programme is centred at the Main International Relations Office (GCRI), located in the Polytechnic's Secretariat. All queries may be answered by e-mail or in person, during the following schedule: Tuesdays and Thursdays, from 2.30pm to 4.30pm, Wednesdays, from 10am to 12pm.

E gcri@sc.ipp.pt **T** 225571074

*Wherever we are,
we are always on the move*





5

P.PORTO Worldwide

MOBILITY

Foreign students may come to P.PORTO through the ERASMUS+ programme. Each year, over 400 students enjoy a study period at P.PORTO (from 3 to 12 months), carry out their research projects, work placements or training periods. The ERASMUS+ programme also makes it possible for both teachers and staff members to enjoy mobility periods at fellow foreign institutions.

The Erasmus Charter for Higher Education 2014–2020 (EACEA) sanctions the quality of mobility in higher education institutions of the countries that have signed the LLP memorandum.

At P.PORTO, students may easily come across a teacher from a different continent (Europe, Africa, Asia or South America) lecturing on the field of their expertise.





6

Apply with us

International Students can apply to courses offered by P.PORTO Schools through the Special Admission Programmes for International Students (CEEI – Concurso Especial para Estudantes Internacionais)

ACADEMIC YEAR

1st Semester

Beginning of the 1st Semester › September Christmas Holidays › December 1st Semester Exams › January and February

2nd Semester

Beginning of the 2nd Semester › Last Week of February | 1st of March Easter Holidays › 1st Week before Easter 2nd Semester Exams › June and July

DURATION

The 1st cycle is made up of a group of units, which constitute the undergraduate degree, translated into between 180 and 240 ECTS and carried out between six and eight (exceptionally on ESTSP) school semesters.

The 2nd cycle has between 90 and 120 ECTS and lasts between three (exceptionally on ESE) and four school semesters.

PORTUGUESE LANGUAGE

P.PORTO has Portuguese language courses available for international and interchange programme students.

E gcri@sc.ipp.pt **T** 225 571 074



**STUDENT WELFARE SERVICES –
ACÇÃO SOCIAL P.PORTO**

P.PORTO Student Welfare Services promote equal opportunities for the admission, attendance and academic success of our students. STUDENT WELFARE SERVICES P.PORTO allocate scholarships and emergency assistance, provide access to accommodation in 8 student residence halls in Porto and Vila do Conde, to canteens and bars, and support for cultural and sports activities.

STUDENT WELFARE SERVICES P.PORTO develop complementary activities that improve the conditions for academic success.

E info@sas.ipp.pt | bolsas@sas.ipp.pt

**ACCOMMODATION –
MAKE YOURSELF AT HOME**

P.PORTO provides assistance to international students in finding accommodation. Students may be accommodated in Halls of Residence, depending on availability.

E residências@sas.ipp.pt

7

Student support

ACADEMIC AND PROFESSIONAL INTEGRATION OFFICE

The Academic and Professional Integration Office of P.PORTO tries to facilitate students' academic integration and to promote academic success and extracurricular activities. It also gives specialised support and promotes initiatives aimed at career development and employability of students and graduates.

This Office acts in Academic Integration, Health and Well-being, Skill Development, Employability and Career Management.

E gjap@sc.ipp.pt **T** 225 571 016

ACADEMIC ORGANISATION OFFICE

The Academic Organisation Office is a P.PORTO service aiming at helping students in admission processes, enrolling in courses, creating support groups and assisting in admission processes to higher education.

E estudante@ipp.pt | **T** 225 571 040 / 808 20 26 20

STUDENTS' UNION

Students' unions are an open channel for communication, sharing and working, all vital concepts to P.PORTO's mission. The students' unions play a vital role representing and defending students' rights with the Schools' management.

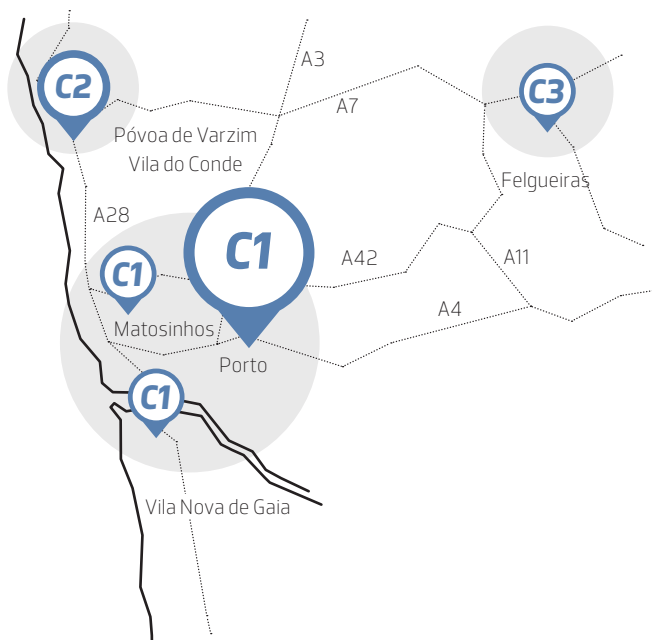
MERIT SCHOLARSHIP

P.PORTO awards Merit Scholarships annually to the best students of both Graduate and Undergraduate programmes, as well as to Technological Specialisation courses.

The scholarships consist of a financial benefit, with a fixed value, and are granted to students with outstanding academic achievement, i.e., those achieving an average A grade and successfully concluding all course units of that academic year.

Enjoying P.PORTO

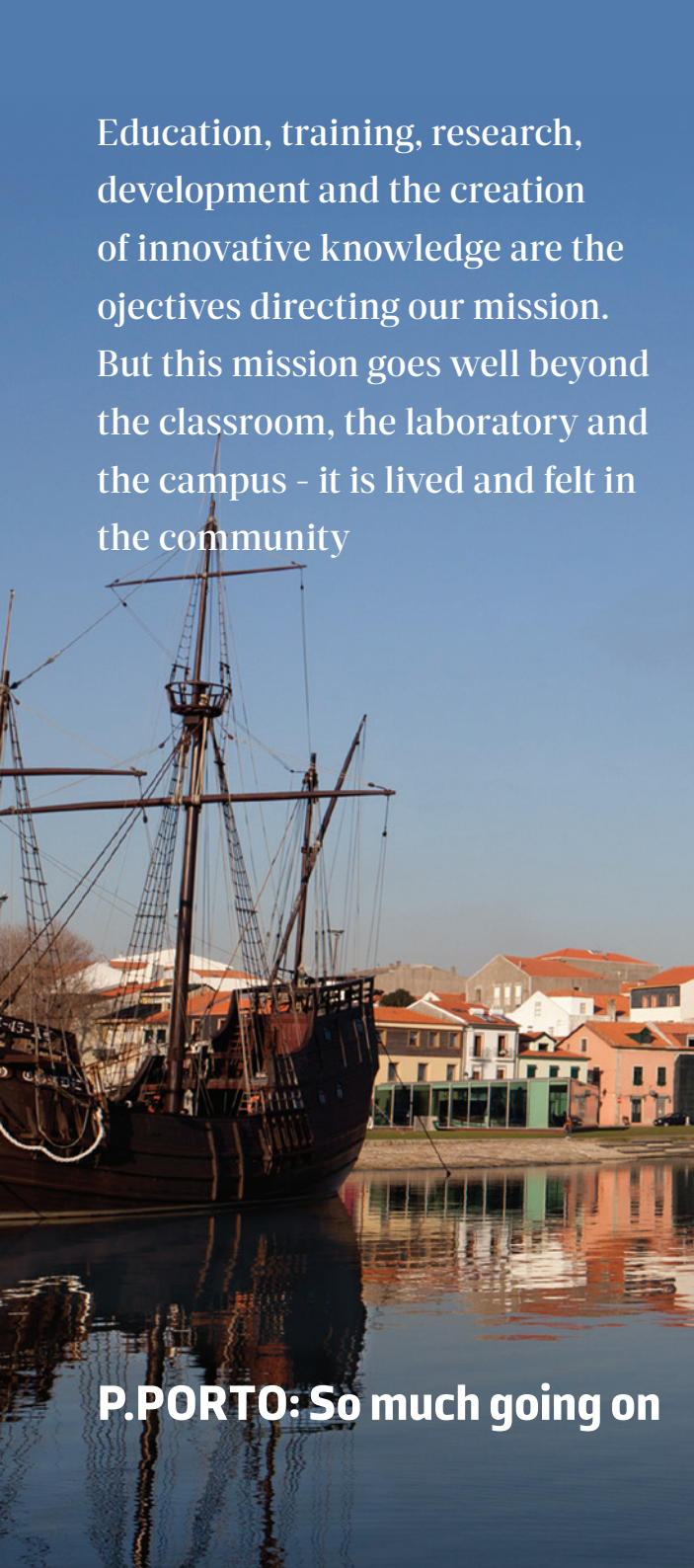
8



- C1** Instituto Superior de Engenharia do Porto
Instituto Superior de Contabilidade e Administração do Porto
Escola Superior de Educação
Escola Superior de Música, Artes e Espectáculo
Escola Superior de Tecnologia da Saúde do Porto
- C2** Escola Superior de Hotelaria e Turismo*
Escola Superior de Media Artes e Design*
- C3** Escola Superior de Tecnologia e Gestão de Felgueiras

*Still to be approved



A large, dark wooden sailing ship with three masts is docked at a quay. The ship is reflected in the calm water. In the background, a town with white buildings and red-tiled roofs is visible under a clear blue sky.

Education, training, research, development and the creation of innovative knowledge are the objectives directing our mission. But this mission goes well beyond the classroom, the laboratory and the campus - it is lived and felt in the community

P.PORTO: So much going on

At **Campus 1**, between downtown Porto and the mainly technological and innovative area of Asprela (north of the county), P.PORTO students can enjoy the perks of both innovative and technological learning venues and a bustling, increasingly cosmopolitan city.

The Asprela Campus, one of the largest in the Iberian Peninsula, covering roughly 250 acres, houses learning, research and innovation, sports and services facilities. There you can find around 60,000 people working and researching every single day.

Campus 2 is located between the towns of Vila do Conde and Póvoa de Varzim. The campus boasts modern infrastructures, state-of-the-art equipment at the disposal of both the School of Media Arts and Design and the School of Tourism and Hospitality.

Felgueiras is home to **Campus 3**, where we can find the School of Management and Technology. This School is the hub of strong synergies created by the coming together of the educational offer the local businesses, which are varied and mainly industrial.

O P.PORTO goes well beyond academia. Our community is not limited to a campus, a city or an area of activity. We live in a city and act as part of it. We intervene in the cultural and social fabric of our country. We promote learning and doing. We make available facilities, equipment, services and human resources. We are cultural agents. We are part of an heritage and keepers of legacy.



CAFÉ-CONCERT

The Café Concert Francisco Beja is home to exhibitions and concerts. This welcoming area offers a regular programming, small performances and theatre shows, jazz concerts, chamber and contemporary music, small orchestras and other kinds of musical groups.

LIBRARIES

Each School has its own library, as well as access to the Central Library, located in Campus 1 in Porto. It has modern and excellent common areas, as well as a fundamental collection of ancient and rare books.



THEATRE

The Helena Sá e Costa Theatre has a regular programming, with national and international performances. It aims at promoting the Arts (both academic and professional), showing the new trends and supporting art projects, which may range from classic to experimental.

MUSEUM

The Museum in Porto School of Engineering has a collection of scientific-teaching instruments, which constitute almost a time capsule, where the great technological advancements of past centuries may be appreciated. Apart from this asset, the museum also includes a library with over 2,000 books.



9 Our facilities

Our campuses are designed with exceptional indoor and outdoor facilities. Whether your interests lean towards art and culture, athletics or recreation, we've got the space to make it happen

FESTIVALS AND EXHIBITIONS

P.PORTO's agenda is both regular and lively. There are film and documentary cycles (Imagens do Real Imaginado), music festivals (Semana PTM, Festival Harmos, Rampa Jazz or Curso Internacional de Música Antiga), a regular programming with live performances and exhibitions of plastic arts. P.PORTO is a talent incubator, where culture has the last word.



P.PORTO EDITIONS

Editor POLITEMA aims at encompassing the whole range of cultural production of our institution, by publishing products that include painting, pedagogy, engineering, children's illustration, documentary films or poetry. POLIFONIA plays the same role for the register of sound.

COMMUNAL STUDY PLACES

There are a variety of spaces across P.PORTO for independent study, relaxing or group collaboration, such as students lounges or informal study places, libraries or recreational places, where you can use our interactive technologies, grab lunch between lectures or work over coffee.



CANTEENS AND STUDENT HALLS OF RESIDENCE

P.PORTO offers several canteens and cafeterias in the different schools, with very competitive prices. We also ensure a large offer of student residence halls, located in Porto and in Vila do Conde. The Halls of Residence meet the students' needs and are made up of individual or shared rooms, study and leisure areas, and maintenance and cleaning facilities.

RESTAURANT

The Teaching Restaurant in the School of Tourism and Hospitality, called A Prova, has a seating capacity of 50. Over the past years, the Restaurant has hosted various events, and has always managed to fully meet customers' expectations.



ACADEMIC GROUPS

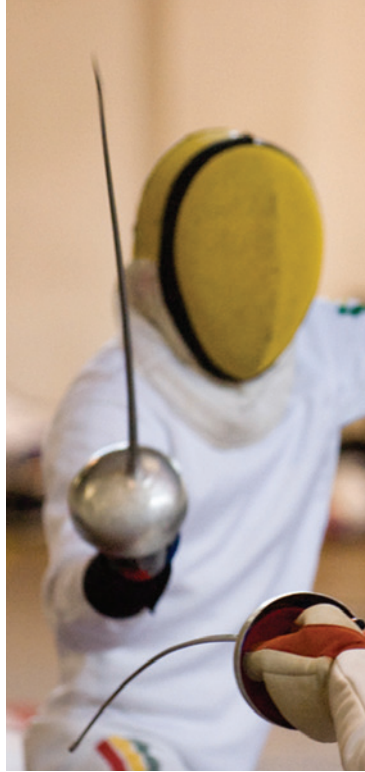
P.PORTO has several extracurricular activities cells and academic groups in which students may participate. "Tunas" and "fado" groups of P.PORTO organise and participate in music festivals, performances and gatherings. The quality of these groups has earned them national and international recognition, translated into awards and invitations for performances.





PARTNERSHIPS

P.PORTO, together with regional cultural agents, set up a broad network that makes it possible for the members of the community to access cultural life, in advantageous conditions. Individual and group discounts for S. João National Theatre, TeCA, S. Bento da Vitória Monastery, Helena Sá e Costa Theatre, Seiva Trupe, Casa da Música or Soares dos Reis National Museum are only some of the benefits that P.PORTO students, faculty and assistant staff are granted, thanks to the partnerships established.



SPORTS

P.PORTO sports complex includes sand courts, outdoor five-a-side football fields, tennis courts, a multi-functional pavilion and a gymnasium, to practice Handball, Football, Basketball, Volleyball, Table Tennis, Tennis, Badminton, Aerobics, Step, Karate, Yoga, Archery and beach sports. It also offers a 2 km running track with 8 workout stations for strength and flexibility exercises.



PORTO

We live and operate in an international context. The foreign students we welcome every year are integral to this, which is why we want them to feel at home.

This is not particularly difficult in a city that was a European Capital of 2001, which hosts one of the best music festival in the world since 2012, which offers venues such as the Casa de Serralves Museum and the Casa da Música, which is home to one of the great Football clubs in the Iberian Peninsula, which hosts a world-known New Year's Eve celebration, which was awarded the title of Best European Destination 2014 and which boasts some of the best hostels in the world. The Porto airport, which welcomes all those who arrive (or return), was again elected one of the best five in Europe by the Airports Council International. Besides all this, UNESCO classified Porto as world heritage site in 1996, for its outstanding historical centre. The Douro, the river that flows alongside the city, gave its name to the oldest demarcated wine region in the world. The Alto Douro Wine Region, where the world-renowned Port wine is produced, was also classified world heritage site by UNESCO. In addition to this heritage, you will find a current vitality and dynamism, a sparkle which allows both residents and visitors to safely enjoy a rich cultural and social life as in any European capital. There's no shortage of things to do, or people to meet. You have to be here to live it first-hand. Porto is so special that, at the beginning of the 19th century, a Portuguese King left his heart in legacy to the city. Metaphorically, however, everybody leaves their hearts in the city which gave its name to the country.

**Think you know
Porto? Think again**





10

(P.) PORTO way of life

VILA DO CONDE/PÓVOA DO VARZIM

There are many advantages to living in both these towns. Vila do Conde enjoys a rich architectural heritage, exquisite gastronomy and an excellent cost of living. As in Porto, tourists and residents alike can enjoy both the river Ave's banks and the Atlantic seashore. The surrounding cities are Póvoa de Varzim, Trofa, Maia and Matosinhos. It is also on the coast of the Atlantic Ocean. Vila do Conde is a major industrial centre, fishing port, beach and tourist area. It is one of the leading and most sought after bathing centres in the country.

The city is part of the same larger urban agglomeration as Póvoa de Varzim. Póvoa de Varzim's population is roughly 65,000. The sunny coastline and beaches, the inviting promenade with delicious pastries and outdoor coffee-shops, the casino, the passion for football, carnival and enjoying life attracts both tourists, students, business and new residents

FELGUEIRAS

Felgueiras is located in the Porto District and has about 15,525 inhabitants. The city is welcoming to visitors and students. The cost of living is quite appealing and its gastronomy has been acclaimed. The bustle of everyday life is typical of an entrepreneurial community but there is always time for a good glass of sparkling wine and some rich egg pastry. Surrounding cities comprise Fafe, Celorico de Basto, Amarante, Lousada, Vizela and Guimarães.

How to get to P.PORTO



Campus 1

Porto GPS: 41.1812713, - 8.5987664,761

Car: Motorway A1, A3, A4

Metro: Yellow Line (São João Hospital)

Bus: 204, 205, 300, 301, 305, 603, 704, 803 (STCP)

Train: São Bento, Campanhã



Campus 2

Póvoa de Varzim/Vila do Conde GPS: 41.366178, - 8.7418871,758

Car: Motorway A28

Metro: Red Line (Póvoa de Varzim)

Coach: Rede Expresso (Póvoa de Varzim)



Campus 3

Tâmega e Sousa GPS: 41.366853, - 8.196921,758

Car: Motorway A11, A42

Coach: Caíde line (Rodonorte), Guimarães line (AV Landim)

Train: Caíde line, Guimarães Guimarães line (CP)



All of P.PORTO's Campuses can be readily reached from the airport Francisco Sá Carneiro, less than 20 km from the centre of Porto. The airport is easily accessed. Take the Metro's Purple Line (E) or the bus' lines (STCP) no. 601, 602 and 604.



There is so much more on-line. Come and meet us



ipp.pt



/politecnicoporto



/politecnico



/politecnicoporto



/politecnicoporto



/politecnicoporto



/politecnicoporto



Instituto Politécnico do Porto



P O L I T É C N I C O D O P O R T O

PRESIDÊNCIA

M RUA DR. ROBERTO FRIAS, 712
4200-465 PORTO, PORTUGAL
T 225 571 000 F 225 020 772
E IPP@IPPT W IPPT

INSTITUTO SUPERIOR DE ENGENHARIA DO PORTO

M RUA DR. BERNARDINO DE ALMEIDA, 431
4249-015 PORTO, PORTUGAL
T 228 340 500 F 228 321 159
E MAIL@ISEPIPPPT W ISEPIPPPT

INSTITUTO SUPERIOR DE CONTABILIDADE E ADMINISTRAÇÃO DO PORTO

M RUA JAIME LOPES AMORIM S/N
4465-004 SÃO MAMEDE DE INFESTA, PORTUGAL
T 229 050 000 F 229 025 899
E INSTITUTO@ISCAPIPPPT W ISCAPIPPPT

ESCOLA SUPERIOR DE EDUCAÇÃO

M RUA DR. ROBERTO FRIAS, 602
4200-465 PORTO, PORTUGAL
T 225 073 460 F 225 073 464
E ESE@ESEIPPT W ESEIPPT

ESCOLA SUPERIOR DE MÚSICA, ARTES E ESPECTÁCULO

M RUA DA ALEGRIA, 503
4000-045 PORTO, PORTUGAL
T 225 193 760
E ESMAE@ESMAEIPPT W ESMAEIPPT

ESCOLA SUPERIOR DE TECNOLOGIA E GESTÃO DE FELGUEIRAS

M RUA DO CURRAL, CASA DO CURRAL, MARGARIDE
4610-156 FELGUEIRAS, PORTUGAL
T 255 314 002 F 255 314 120
E CORREIO@ESTGFIPPT W ESTGFIPPT

ESCOLA SUPERIOR DE TECNOLOGIA DA SAÚDE DO PORTO

M RUA DE VALENTE PERFEITO, 322
4400-330 VILA NOVA DE GAIA, PORTUGAL
T 222 061 000 F 222 061 001
E GERAL@ESTSPIPPPT W ESTSPIPPPT

ESCOLA NEW SUPERIOR DE MÍDIA ARTES E DESIGN

M RUA D. SANCHO I, 981
4480-876 VILA DO CONDE, PORTUGAL

ESCOLA NEW SUPERIOR DE HOTELARIA E TURISMO

M RUA D. SANCHO I, 981
4480-876 VILA DO CONDE, PORTUGAL