
Lithuanian University of Health Sciences



CONTENTS

4 -19. Introduction

Rector's Welcome
Alumni
Lithuania & Kaunas
LSMU Global Overview
Facts and Figures
System of Higher Education in Lithuania
University Structure
Degree Programmes

20 -49. Degree Programmes in English

Medicine
Odontology
Pharmacy
Veterinary Medicine
Public Health
Nursing
Advanced Nursing Practice
Occupational Therapy
Veterinary Food Safety
Food Sciences
Lifestyle Medicine
Admission
Students Support
Fellowships

50 - 57. Places to Practise

University Hospital
University Pharmacy
Animal Clinics

58 - 67. Research and Development

Innovations and Entrepreneurship Centres
Open Access Centres
Clinical Achievements
Leading Areas of R&D
International Cooperation

68 - 71. Students

Erasmus +
Student Life



LIETUVOS SVEIKATOS
MOKSLŲ UNIVERSITETAS

LSMU - Lietuvos sveikatos mokslų universitetas

LITHUANIAN UNIVERSITY OF
HEALTH SCIENCES

Rector's Welcome



It is my great pleasure to warmly welcome you to the Lithuanian University of Health Sciences (Lietuvos sveikatos mokslų universitetas – LSMU), one of the best and the largest institution of higher education for biomedical sciences in Lithuania with almost 100 years of academic experience and great potential for development. Altogether, our academic community is over 25 000 members of staff, including more than 7300 Lithuanian students and nearly 800 international students. Clinical teaching and research are mainly based on cooperation with the largest health care institution in the Baltic States – the Hospital of Lithuanian University of Health Sciences “Kauno klinikos”. You will get a great opportunity to widen and deepen your knowledge in a number of disciplines, to improve your skills within the modern and innovative environment and to become highly qualified specialists in a fast-changing world of practising health sciences.

Our university has over 46000 alumni, who are famous not only in Lithuania but all over the world. They are members of the Parliament,

heads of research institutes, hospitals, ambassadors in different countries, etc. I cordially invite you to join our community as it is one of the greatest places to study and grow academically and personally, to develop the cultural world outlook and to make your stay at the university fulfilling and rewarding your future career.

Let it be your new home at one of the leading Universities in Lithuania – Lithuanian University of Health Sciences! We trust you will enjoy many advantages of this pleasant and beautiful atmosphere of our university and historical Kaunas city.

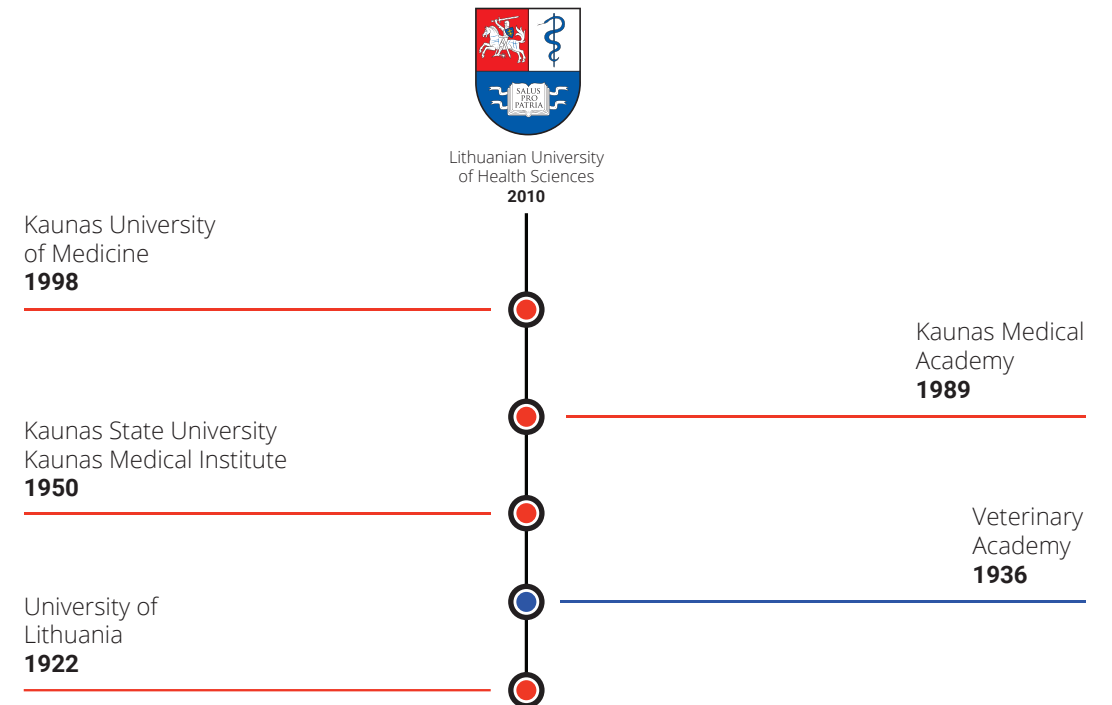
Yours sincerely,

Professor Remigijus Žaliūnas
RECTOR OF LSMU



The University takes pride in having been Alma Mater of many international students for 25 years. Nearly 800 students from over 50 countries are enrolled at Lithuanian University of Health Sciences.

Brief History of LSMU



Figures

25 000
Academic community

8 100
Current students

46 000
Alumni

11
Study programmes
in English

Israel Sweden Germany

Origin of the majority of international LSMU students



Alumni

Since its establishment in 1922, the Lithuanian University of Health Sciences has been Alma Mater of more than 46,000 alumni, including over 800 international graduates from 45 countries. Most international graduates are from Lebanon and Israel. International students successfully completed Medicine, Odontology, Pharmacy and Public Health study programmes in English.

Alumni are a part of the University community, so we look forward to renewing and maintaining contacts with them. It is always pleasant to meet the graduates either in their countries or Lithuania and learn how they are doing in their professional lives. It is nice to hear that the alumni are happy with their choice to study at LSMU and current professional activities. We are glad that Alumni join LSMU representatives in a higher education fairs and the events when University

presentations are held in different countries. They share their experience and give their opinions about studies in Lithuania and willingly answer the questions. We are thankful to the graduates for warm communication and continued support!



Notable alumni



Prof. Joseph Press
CEO; Schneider Children's Medical Center of Israel



Antanas Vinkus
Lithuanian doctor, diplomat, political and public figure



Prof. Jurgis Brėdikis
World famous Lithuanian cardiac surgeon.
Former Minister of Health



Vytenis Povilas Andriukaitis
Physician, historian, Lithuanian political and public figure, signatory of Lithuanian state sovereignty. European Union Commissioner for health and food safety (since 2014. November 1.)



Rasa Juknevičienė
Physician, politician, signatory of March 11 Act, former Minister of National Defence



Juozas Olekas
Doctor microsurgeon, Lithuanian public and political figure, member of the Parliament, former Minister of National Defence.



Dr. Jolanta Dičkutė
Former member of the European parliament. Currently working in the private pharmaceuticals company as Market Access Manager



Mohamad Abd. Chamsin
Private pharmacy Owner, Tripoli Council Member, Chairman of School Health Committee, Tripoli, Lebanon



Since its establishment in 1922, the Lithuanian University of Health Sciences has been Alma Mater of more than 46,000 alumni, including over 800 international graduates from over 50 countries. Most international graduates are from Lebanon and Israel.

Lithuania

Area: 65 200 km²

Population: 2,88 million

Currency: Euro

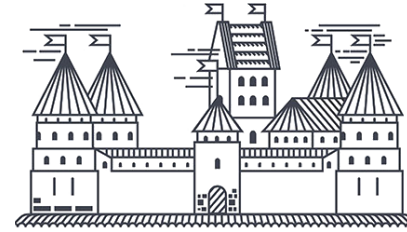
Capital: Vilnius

Situated along the south-eastern shore of the Baltic sea, Lithuania borders with Latvia, Belarus, Poland and Russian exclave Kaliningrad.



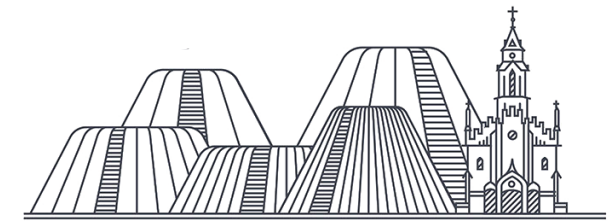
Places to Visit

TRAKAI HISTORICAL PARK



- Park covers 8,200 ha which includes more than 32 lakes;
- Trakai Castle is situated on the island in the middle of Galvė lake. It is one of the most visited historical architectural monuments in Lithuania.

KERNAVĖ



- The ancient capital of pagan Lithuania based on the picturesque bank of the river Neris. The Baltic States' only complex of five Hill-forts;
- The site has exceptional evidence of the contact of Pagan and Christian funeral traditions.

VILNIUS OLD TOWN



- One of the largest surviving medieval old towns in Northern Europe; it has preserved an impressive medieval layout and natural setting;
- Vilnius Old Town is Unesco Europe's Largest Baroque Old Town taking area of 3,59 square kilometres.

CURONIAN SPIT



- The spit is a peninsula that separates the Baltic Sea and the Curonian Lagoon in a slightly concave arc for 98 km from the Kaliningrad Peninsula to the town of Klaipėda;
- The most significant element of the cultural heritage of the spit is represented by the old fishing settlements. The earliest of these were buried in sand when the woodland cover was removed.



Great living to cost ratio

Kaunas



Kaunas is a city in south-central Lithuania. At the confluence of the Neris and Nemunas rivers, Kaunas Castle is a medieval fortress, housing historical exhibitions.

Panorama of Kaunas old town from a hill side in the central area

Reasons to Stay



Just the right size

With population of around 298 000 people, Kaunas is not overcrowded; however, the city is always busy.



Student friendly

With 4 major universities, Kaunas is a students' city where the nightlife is always active.



Great location

Kaunas is located in the center of the country, which allows you to explore Lithuania easily.



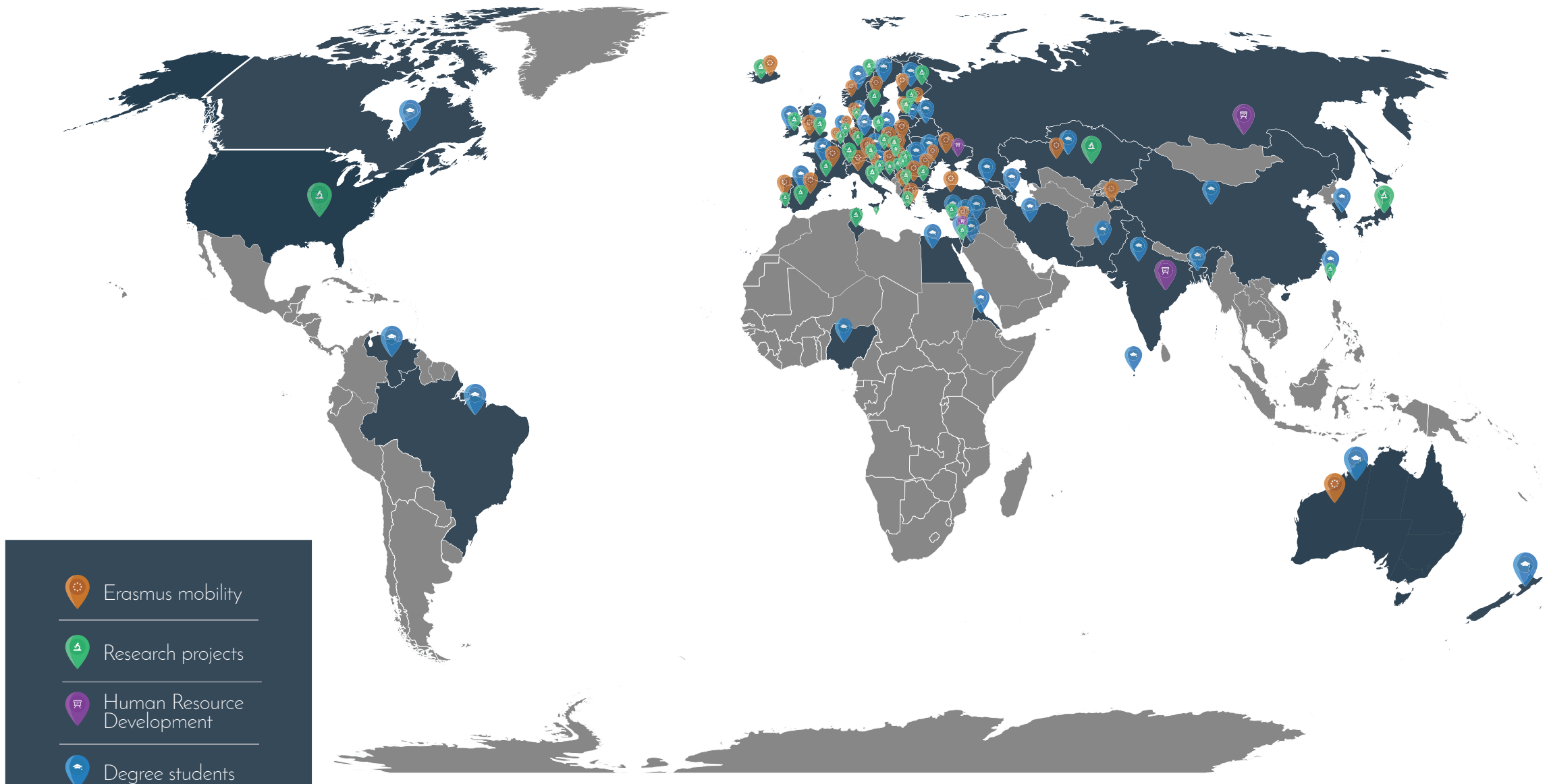
Take a break

Kaunas has its own airport with affordable flight offers from low-fare airlines; you can reach most of European cities easily.



Inspiring location for inspired students

LSMU GLOBAL OVERVIEW



FACTS AND FIGURES

1 Top choice for medical education in Lithuania

11 Programmes taught in English and more to come

10% International student saturation among all students

53 International students from 53 countries

170 Partner Universities around the World

8100 Students currently studying at LSMU

100 University will be celebrating its 100 year anniversary in 2020

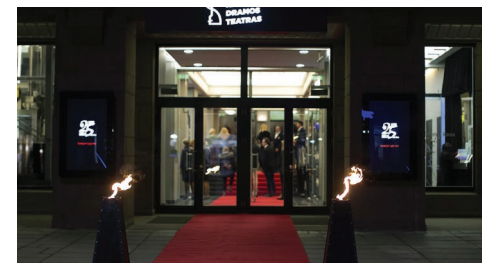
1070 Residents currently in practice in LSMU Hospital 'Kauno klinikos'

90% Of international students speak fluent Lithuanian when they have a Lithuanian boyfriend or girlfriend

30% Income of Taxi companies in Kaunas comes from LSMU international students

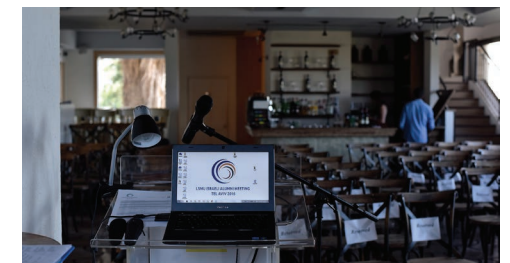


Celebration of 25 years of international studies at LSMU



LSMU ISRAELI ALUMNI MEETING TEL AVIV 2016

The first LSMU alumni meeting abroad, on April 6, 2016



System of Higher Education in Lithuania



Admission

University degrees are offered in three cycles: the first cycle is undergraduate (Bachelor), the second cycle is graduate (Master, and/or specialised professional studies), and the third one is postgraduate (Doctoral; residency; postgraduate in the Arts).

Second Cycle

Master's degree
Master's degree and/or a specialised professional qualification one of the options open to you is the Integrated study programmes. These programmes combine university studies of the first and second cycles. If you are studying for the Master's Diploma (which is only offered at universities), you have to obtain **90 - 120 ECTS** credits.

Third Cycle

PhD
In the third cycle, students study for a postgraduate qualification. This could be for a Doctorate or a postgraduate qualification in the Arts. Postgraduate studies are offered by a university or a university and science institution collectively. The duration of the different postgraduate studies is determined by the Government.

First Cycle

Bachelor's degree
During the first cycle, you can choose to study for a Bachelor's degree with or without a professional qualification for which you will need to have obtained **180 - 240 ECTS**. When you successfully complete the course, with or without a professional qualification you receive a Bachelor's Diploma. If you only want to study for the professional qualification, then you will receive a Higher Educational Diploma.

Study Process at LSMU

Quality study programmes. A need for a new programme is assessed and a profile for future specialist is defined before developing a new programme. Both University teachers and social partners take part in programme development. Existing study programmes are regularly analysed and updated by improving contents of the programme and intended learning outcomes. Quality and improvement of the study programmes are responsibilities of Study Program Committees, consisting of teachers, as well as students and social partners' representatives. Lithuania is a member the European Association for Quality Assurance in Higher Education (ENQA). All study programs shall pass accreditation process according to Standards and guidelines for quality assurance in the European Higher Education Area (ESG 2015).

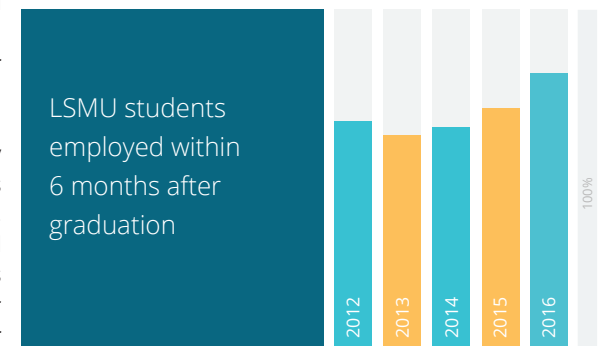
Competent teachers fit for delivering study programmes. Certification of the teachers includes assessment of teachers' professional competence, research activities, educational development as well as students' opinion. University provides possibilities to improve educational skills; University Center for Teachers' Educational Competence organises refresher courses for teachers.

Student oriented study process. Study regulations are clearly defined in the University with the set procedures for study schedules, students' achievement assessment, appeals and reassessments and social and academic support. According to Study Regulations, students with special needs or spending some time in other institutions on exchange programmes can study by an individualised schedule.

Students and social partners' participation in decision-making. Students' representatives take part in all bodies, concerned with studies from highest ruling

bodies (University Council, Senate or faculty councils) to committees and work groups. Social partners help to ensure that programme contents, knowledge and skills students acquire are up to date and correspond to labour market needs.

Use of study process data for quality improvement. Various quantitative and qualitative data, describing study process and study quality is collected - surveys of students, teachers and alumni's opinion, statistical data and discussions on selected study quality topics. Collected information is assessed in Study Quality



Monitoring and Assurance Commission and University governing bodies: Rectorate, faculty councils and Senate.

Feedback and continuous quality improvement. Results of the study quality assessment are presented not only to governing bodies of the University, but also to academic community: the main assessment results are published in the University weekly newspaper and on the quality section of the University web page. Public information about study quality raises community's awareness and helps develop quality culture in the institution.



In the third cycle at LSMU, seek for a scientific degree or qualification in specific medical field. Residency studies take 3 to 6 years depending on the field of qualification.

University Structure



LITHUANIAN UNIVERSITY OF HEALTH SCIENCES



MEDICAL ACADEMY



VETERINARY ACADEMY

Faculty of Medicine

Institute of Cardiology

Faculty of Veterinary Medicine

Institute of Animal Science

Large Animal Clinic

Faculty of Pharmacy

Faculty of Odontology

Institute of Endocrinology

Faculty of Animal Husbandry Technology

Dr. L. Kriaučeliūnas Small Animal Clinic

Faculty of Nursing

Institute of Neurosciences

Faculty of Public Health



LSMU HIGH SCHOOL



LSMU HOSPITAL



KAUNAS CLINICAL HOSPITAL

Degree programmes

MEDICINE

Integrated studies

ODONTOLOGY (Dentistry)

Integrated studies

PHARMACY

Integrated studies

VETERINARY MEDICINE

Integrated studies

MEDICAL AND VETERINARY BIOCHEMISTRY

Bachelor degree studies

MEDICAL AND VETERINARY GENETICS

Bachelor degree studies

DENTAL HYGIENE

Bachelor degree studies

MIDWIFERY

Bachelor degree studies

OCCUPATIONAL THERAPY

Bachelor degree studies

ANIMAL SCIENCE

Bachelor degree studies

SOCIAL WORK IN MEDICINE

Bachelor degree studies

PHYSICAL THERAPY

Bachelor degree studies

HEALTH INFORMATICS

Bachelor degree studies

NURSING

Bachelor degree studies

HEALTH PSYCHOLOGY

Master degree studies
Bachelor degree studies

VETERINARY FOOD SAFETY

Master degree studies & Bachelor degree studies

ANIMAL HUSBANDRY TECHNOLOGY

Master degree studies & Bachelor degree studies

PUBLIC HEALTH

Bachelor degree studies & Master degree studies

FOOD SCIENCES

Bachelor degree studies
Master degree studies

NURSING LEADERSHIP

Master degree studies

ADVANCE NURSING PRACTICE

Master degree studies

HEALTH PROMOTION AND REHABILITATION

Master degree studies

ART THERAPY

Master degree studies

MANAGEMENT OF PUBLIC HEALTH

Master degree studies

LIFESTYLE MEDICINE

Master degree studies

MANAGEMENT OF ANIMAL RESOURCES

Master degree studies

LABORATORY MEDICINE BIOLOGY

Master degree studies

DEGREE PROGRAMMES IN ENGLISH

22 - 23 MEDICINE

24 - 25 ODONTOLOGY

26 - 27 PHARMACY

28 - 29 VETERINARY MEDICINE

30 - 31 PUBLIC HEALTH

32 - 33 NURSING

34 - 35 ADVANCED NURSING PRACTICE

36 - 37 OCCUPATIONAL THERAPY

38 - 39 VETERINARY FOOD SAFETY

40 - 41 FOOD SCIENCES

42 - 43 LIFESTYLE MEDICINE

44 - 45 ADMISSION

46 - 47 STUDENT SUPPORT

48 - 49 FELLOWSHIPS



Medicine

Degree Programme

6 years

Master in Medicine

Physician

In English since 1991

The degree programme **Medicine** educates medical doctors capable of entering residency programmes or having necessary skills to provide emergency aid and health care services under the supervision of a physician.

STRUCTURE OF THE PROGRAMME

YEAR 1

Anatomy, Histology and Embryology, Biochemistry, Physiology, etc., the Lithuanian Language

YEARS 2 - 3

Reproduction and Inheritance, Professional Competence, Basics of Neurosciences, Immune Response and Infection, Respiration and Circulation, Metabolism and Homeostasis, Basics of Preclinical Studies and Locomotion, Lithuanian Language

YEARS 4 - 6

Clinical Modules, Clinical Medical Practice

Career opportunities

- ✓ Continue your education by entering PhD or residency programmes;
- ✓ Provide health care services under the supervision of a physician specialist;
- ✓ Apply for a license to practice medicine;
- ✓ Provide emergency medical aid;



Why study Medicine at LSMU ?

Clinical skills developed in the largest University hospital in the Baltic States, "Kauno klinikos";

Problem-based learning curriculum, which allows students to solve clinical cases, conduct research and discuss and present hypothetical theories, solutions or recommendations;

Possibility to spend a semester or a year abroad with the Erasmus+ exchange programme;

Over 500 international students studying Medicine.

Odontology (Dentistry)

Degree Programme

5 years

Master in Odontology

Odontologist

In English since 1992

The degree programme **Odontology** aims at educating dentists capable of diagnosing and treating dental conditions and cooperating with other health care specialists in ensuring individual and public health.

STRUCTURE OF THE PROGRAMME

YEARS 1 - 2

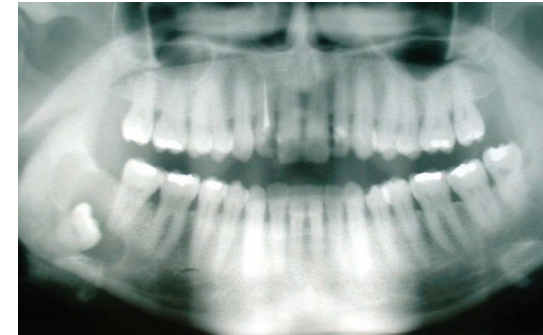
Anatomy, Histology and Embryology, Biochemistry, Physiology, etc., the Lithuanian Language

YEARS 3 - 5

Clinical Cariology, Oral and Maxillofacial Surgery, Clinical Endodontics and Clinical Practice, Orthodontics, Clinical Practice of Odontology, Periodontology and Oral Mucosa Disease Clinical Practice, Prosthetic Dentistry and Clinical Practice, Paediatric Dentistry

Career opportunities

- ✓ Practice dentistry;
- ✓ Work in public or private institutions conducting research in dentistry or other dentistry-related areas of health promotion;
- ✓ Continue your education by entering PhD or residency programmes.



Why study Odontology at LSMU ?

Clinical skills developed in phantom-head laboratories and clinics of the University;

Small groups, i.e. up to 10 students, in clinical courses;

Possibility to spend a semester or a year abroad with the Erasmus+ exchange programme;

Over 300 international students studying Odontology.

Pharmacy

Degree Programme

5 years

Master in Pharmacy

Pharmacist

In English since
1991

The degree programme **Pharmacy** trains highly qualified pharmacy professionals by organising and providing modern university-level studies in pharmacy, conducting relevant scientific research and providing efficient practical training.

STRUCTURE OF THE PROGRAMME

YEARS 1 - 2

Biology, Mathematics, Physics, Anatomy, Physiology and Pathophysiology, Internal Diseases, the Lithuanian Language

YEARS 3 - 5

Inorganic and Organic Chemistry, Analytical Chemistry, Pharmaceutical Botany and Pharmacognosy, Pharmaceutical Chemistry, Pharmaceutical Technology, Pharmacology, Toxicology, Clinical Pharmacy and Pharmacotherapy, Pharmaceutical Care and Social Pharmacy, Pharmaceutical Biotechnology, Biopharmaceutics, Practical Training at Public and Hospital Pharmacies

Career opportunities

- ✓ Be employed at pharmacies, pharmaceutical wholesale companies, companies of the pharmaceutical industry, agencies of international pharmaceutical companies or laboratories engaged in pharmaceutical research;
- ✓ Engage in pharmaceutical activities and carry out scientific research;
- ✓ Continue your education by entering PhD programmes.



Why study Pharmacy at LSMU ?

Practical skills developed in the brand new laboratories of the Faculty of Pharmacy with up-to-date equipment;

Multicultural environment and student community: international students from over 50 different countries make up nearly 10% of the total student population at LSMU;

Possibility to spend a semester or a year abroad with the Erasmus+ exchange programme.

Veterinary Medicine

Degree Programme

6 years

Master in Veterinary Medicine

Veterinary Surgeon

In English since 2011

The degree programme **Veterinary Medicine** aims at educating highly skilled veterinary surgeons capable of working in private and state network of veterinary services, diagnose animal diseases, treat ailing animals, impose preventative measures, exercise control over diseases and food, investigate, apply knowledge, address complicated veterinary problems, and apply skills and knowledge in independent activity and further learning.

STRUCTURE OF THE PROGRAMME

YEARS 1 - 2

Anatomy histology and Embryology, Physiology and Functions of Animals as well as the Fundamentals of Animal Husbandry and Animal Welfare, Cell Biology, Zoology, Botany, Microbiology, Genetics as well Biophysics, etc.

YEARS 3 - 4

Propaedeutics, Pharmacology, Pharmacy and Pharmacotherapy, Veterinary Pathology Toxicology Parasitology, Immunology and Epidemiology, Professional Communication, etc.

YEARS 5 - 6

Diagnostic Imaging, Large and Small Animals Veterinary Surgery and Internal Diseases, Veterinary Obstetrics, Gynaecology and Andrology, Forensic Veterinary Medicine, Food Hygiene, Practical Skills, Clinical Practice, etc.

Career opportunities

- ✓ Practise veterinary medicine;
- ✓ Be employed in the state food and veterinary service system;
- ✓ Work in private practice;
- ✓ Continue your education by entering PhD or veterinary residency (speciality) programmes.



Why study Veterinary Medicine at LSMU ?

Convenient learning facilities: classrooms, laboratories and clinics are located in one campus;

Tuition fees at a good quality-to-cost ratio and reasonable living costs in the country;

Small groups, i.e. up to 10 students, in clinical courses;

Possibility to spend a semester or a year abroad with the Erasmus+ exchange programme.

Public Health

Master Degree Programme

📅 2 years
📄 Master in Public Health
👤 Specialist in Public Health
📅 In English since 2004

The degree programme **Public Health** aims to provide competencies for students wishing to pursue a career in public and private health sectors as well as in non-governmental organizations. The MPH degree is the most widely recognized professional credentials for leadership in public health. The programme is intended for graduates already holding a bachelor's or master's degree, who are seeking to broaden their understanding and knowledge in the field of public health.

STRUCTURE OF THE PROGRAMME

YEAR 1

Introduction to Public Health and Health Care System, Environmental Health, Health Ethics and Law, Health Informatics and Research, Applied Epidemiology

YEAR 2

Health Policy and Strategy, Health Economics, Management of Changes, Health Psychology and Human Relations, Methods of Data Analysis, Preparation and Defence of Master's Thesis

Career opportunities

- ✔ Work in public health care services in local, national and international public health centres and other institutions;
- ✔ Continue your education by entering PhD programmes;
- ✔ Work in the inter-sectorial field within NGOs and public health projects, actions and initiatives;



Why study Public Health at LSMU ?

- Diploma recognised in EU, USA and other countries;
- Support system for students' adaptation: mentoring, tutoring and psychological counselling;
- Possibility to spend a semester or a year abroad with the Erasmus+ exchange programme;
- WHO collaborating centre for NCDs.

Nursing

Degree Programme

4 years

Bachelor in Nursing

General Practice Nurse

New

The degree programme **Nursing** aims at preparing nurses, who understand the principles, theories and methods of nursing, have broad knowledge of nursing science, who are able to evaluate independently and critically the nursing needs of a healthy person and chronically ill people with different somatic and mental health diseases, and who have adequate personal and professional value system.

STRUCTURE OF THE PROGRAMME

YEARS 1 - 4

Humanitarian-Social Sciences, Biomedical Sciences, Health Care, Nursing Techniques; Environment and Health Sciences, Nursing, Basics of Clinical Subjects; Adult Nursing, Pedagogic Module, Nursing Administration and Research Work; Special Nursing, Geriatric Nursing, Final Clinical Practice Examination, Preparation and Defence of Bachelor's Thesis

Career opportunities

- ✓ Apply for a license to practice nursing;
- ✓ Work as a general practice nurse at different public and private health care institutions providing health care services at all three care levels;
- ✓ Continue your education by entering master's programmes;



Why study Nursing at LSMU ?

Clinical skills developed in the largest University hospital in the Baltic States "Kauno klinikos";

Multicultural environment and student community: international students from over 50 different countries make up nearly 10% of the total student population at LSMU;

Possibility to spend a semester or a year abroad with the Erasmus+ exchange programme;

WHO collaborating centre for Nursing.

Advanced Nursing Practice

Master Degree Programme

2 years

Master of Nursing

New

The aim of the study program is to prepare a competent advanced practice nurse with acquired modern knowledge, practical skills and considerable critical thinking who would rely on the system of professional and personal values formed and is able to apply advanced nursing practice solutions based on scientific research, to work independently in various health care institutions and to take leadership in a dynamic multi-professional environment in order to effectively deal with the problems of health care system.

STRUCTURE OF THE PROGRAMME

YEAR 1

Health care system management, law and quality, Clinical ethics, Preparation of final thesis: Research Methodology I and II; Pathophysiology (advance level); Clinical pharmacology (advance level); Assessment of health condition and management of chronic and acute diseases (conditions); Health promotion and disease prevention programs; Clinical practice.

Career opportunities

- ✓ Advanced practice nurse can provide care for patients at home within in- and out- patient health care institutions at palliative care centres etc.;
- ✓ Provide emergency medical aid.

YEAR 2

Specialization' subjects in Advanced nursing practice in primary care; Advanced nursing practice in emergency and Advanced nursing practice in anaesthesiology and intensive care. Clinical practice Defence of Master Thesis and The final qualifying exam (clinical competencies)



Why study Advanced Nursing Practice at LSMU ?

Clinical skills developed in the largest University hospital in the Baltic States "Kauno klinikos";

Better career opportunities, higher salary, more autonomous practice;

Work experience in University Hospital for 12-24 months (depending on further career);

Benefits – flexibility and adjustment to changing environments;

Master degree and professional qualification of advanced practice nurse.

Occupational Therapy

Degree Programme

4 years

Bachelor of Occupational Therapy

New

The aim of the study programme **Occupational Therapy** is to educate and train specialists who would have comprehensive knowledge in occupational therapy, the basics of research, and practical skills required for the work of an occupational therapist, for the analysis of a person's occupational performance, and for the formation of the aims and objectives of occupational therapy.

STRUCTURE OF THE PROGRAMME

YEARS 1 - 2

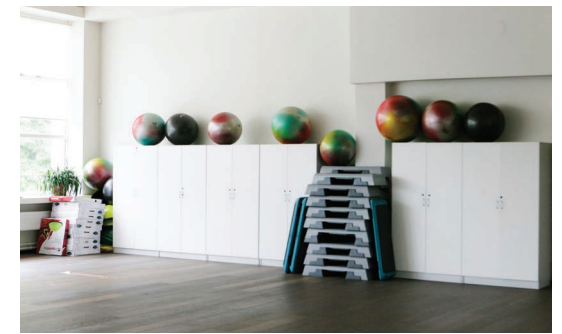
General university education subjects (Introduction to Studies, Professional Language, Fundamental subjects in the study field, First aid, Speciality subjects, PRACTICE I; Speciality subjects, General university education subjects (Professional foreign language), Fundamental subjects in the study field, PRACTICE II;

YEARS 3 - 4

Speciality subjects (Human occupation and work; Problems of occupational performance and OT; OT in community), General university education subjects, PRACTICE III; Speciality subjects (Management of health care system and scientific research in OT; OT for patients with mental disorders), PRACTICE IV, V, Preparation and Defence of Bachelor's Thesis;

Career opportunities

- ✓ Apply for a license to practice occupational therapy;
- ✓ Continue your education by entering master or PhD programmes;
- ✓ Provide occupational therapy services.



Why study Occupational Therapy at LSMU ?

Clinical skills developed in the largest University hospital in the Baltic States "Kauno klinikos";

Degree and professional qualification recognized in EU;

Occupational Therapy programme is approved by World Federation of Occupational Therapy;

Possibility to spend a semester abroad with the Erasmus+ exchange programme.

Veterinary Food safety

Degree Programme

4 years

Bachelor in Public Health

New

The degree programme of **Veterinary Food Safety** aims at educating professionals with exceptional expertise in food safety and able to ensure public health through the improved safety of raw materials and food products of animal and plant origin along the global food production chain.

STRUCTURE OF THE PROGRAMME

YEAR 1

Philosophy, Foreign Language, Introduction to Public Health Studies, Chemistry, Biochemistry, Food Chemistry, Sociology, Morphology, Physiology, Genetics, Applied Biology, etc.

YEARS 2 - 4

Food Production Technology, Microbiology and Immunology, Epidemiology, Dairy Products Technology, Hygiene and Technology of Aquatic Products, Meat and Egg Hygiene, Food of Plant Origin Production and Hygiene, Health Policy and Strategy, Food Microbiology, Risk Analysis, Food Safety and Quality Management, Food Toxicology, Functional Food, etc.

Career opportunities

- ✓ Work at various levels of governmental, international and educational institutions, dealing with food safety and public health;
- ✓ Work as food safety professionals at the food establishments, laboratories, supermarkets, catering companies and educational institutions.



Why study Veterinary Food Safety at LSMU ?

Extensive interdisciplinary studies based on fundamental and applied research;

Two internships at the selected food establishment to develop practical skills;

Possibility to spend a semester or a year abroad with the Erasmus+ exchange programme;

Brand new laboratory facilities.

Food Sciences

Master Degree Programme

2 years

Master of Food Science

New

The master programme Food Sciences aims to educate qualified professionals able to use food research results at food factories and develop new products complying with demands of customers and satisfying their needs of healthy nutrition. In addition, graduates get competences in human resource management, organisation of production process and confidence for quick self-adjustment to continuously changing market.

STRUCTURE OF THE PROGRAMME

YEAR 1

Food biotechnology; Nutrition and health; Functional food; Toxins in food; Organisation of food testing; Applied statistics for research.

YEAR 2

Development of new food product; Dietetic nutrition; Additives in food and innovations; Organisational psychology; Small business management; Industrial practice; Final master thesis.

Career opportunities

- ✓ Establish own business in catering, food production;
- ✓ Be employed at food factories as a Master of production, technologist, quality manager, supervisor of product development, project manager in food and agriculture related organizations, food quality inspector;
- ✓ Work in companies related to biotechnology sector;



Why study Food Sciences at LSMU ?

Extensive interdisciplinary studies based on fundamental and applied research;

Multicultural environment and student community: students from over 50 different countries. International students take over 10% of the total student population;

Opportunity to study abroad according to the Erasmus+ exchange programme;

Extensive support system for international students: mentoring, tutoring, psychological counselling, etc.

Lifestyle Medicine

Master Degree Programme

1.5 years

Master in Public Health

New

The degree programme **Lifestyle Medicine** aims at training mediators who bring together the best in traditional community-focused public health with the best in person-oriented health care. These specialists will be able to help people implement the needed lifestyle changes in diet, exercise, smoking and stress management; evaluate the risk of harmful habits and addictions; identify and assess the environmental, lifestyle, psychological and biological health risk factors and determine priorities of health strategy and policies.

STRUCTURE OF THE PROGRAMME

YEAR 1

Public Health, Nutrition, Physical Activity and Health, Mental Health and Lifestyle, Research Work in Lifestyle Medicine, Preparation of Master's Thesis

YEAR 2

Elective Courses, Practice, Preparation of Master's Thesis

Career opportunities

- ✓ Prevent and manage different risk factors, improve individual behaviour related to noncommunicable diseases and achieve this by working in primary health care settings, medical teams, public health bureaus or private practice;
- ✓ Continue your education by entering PhD programmes.



Why study Lifestyle Medicine at LSMU ?

Cooperation with USA universities in a distance learning format;

Blended learning approach, merging onsite and online learning, providing optimal convenience, especially for non-residents and those who need to combine studies with current employment;

Contribution of highly skilled professionals to the teaching process;

Possibility to spend a semester or a year abroad with the Erasmus+ exchange programme.

Admission

01

Evidence of eligibility

- Secondary Education (or equivalent) - finished or final year;
- Bachelor degree for applicants for master degree programmes;
- Good English level certified by TOEFL(60) or IELTS(5,5) or CERF B2 level, native English speaker or English test at the Entrance Exam.
- The Entrance Exam comprises of 30 questions in Biology and 30 in Chemistry. *Exemptions from entrance test apply for graduates from high school from some countries in case of outstanding graduation results. Ask admission personnel for details.*
- Good motivation for selected field of study.

02

Evaluation

- First evaluation of submitted application free of charge;
- Feedback in 72 hours from submission;
- Open days and entrance exam each month from February to June;
- Wide range of countries to join entrance exam.

03

Studies

- When validation of your documents has been finished and you passed entrance exam on a good level, we congratulate you as a student at the Lithuanian University of Health Sciences;
- If you encounter any problems throughout your studies, we have plenty of staff there to help you.

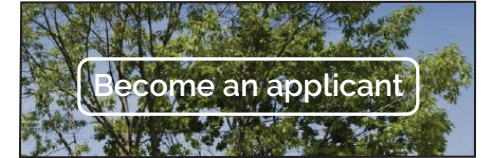
Application fee: €150
Registration fee: €250

Open Days

<https://goo.gl/YgQ8pG>



Apply online



Click to become an applicant

Your given name(s) e.g. John	Your family name e.g. Smith
Your e-mail e.g. name@example.org	

Fill in your contact information

[Apply now!](#)

And now you are ready to apply

<https://apply.lsmuni.lt>



STUDENT SUPPORT

Studying abroad is likely to be an exciting, enriching and fulfilling experience. Living in a new country can be personally rewarding and provides a rare opportunity to know other society from within. On the other hand, initially, it may also feel daunting and overwhelming at times. Therefore, the University has a well-developed support system for international students. It is designed to make the study-abroad experience as easy and enjoyable as possible, from application all the way through to graduation.

MENTORING

The purpose of the Mentor programme is to facilitate adaptation of the first-year students at LSMU through support of the experienced students who serve as mentors. Each group of first-year students gets two or three mentors. A mentor is an older student who is volunteering to help their assigned group of students by answering their questions. The mentors are there so that mentees could turn to them when they need help: when they do not know how to get to a particular class, want to receive tips on how to prepare for a certain exam, or are simply curious where to have good lunch in Kaunas.

TUTORING

A peer tutor may be available to any international student who wants to get help with one or another course and to study it in a supportive environment with a fellow student. Peer tutoring is an opportunity to connect with a student who has previously done well in some courses. Most tutoring is one-on-one, but also, tutors can occasionally work with small groups of students. Peer tutors receive training, understand challenges and want to help the other students to learn what they know best. Peer tutoring is free of charge.

PSYCHOLOGICAL COUNSELLING

Psychological counselling is offered to all international students studying at the Lithuanian University of Health Sciences, who want to talk and find solutions. The information students provide is confidential. Consultations may be held in English, Russian and Lithuanian. Psychological counselling is free of charge.

Psychological counselling may be held in English, Russian and Lithuanian. It is free of charge!



Tutoring session



Living in a new country can be personally rewarding, and it provides a rare opportunity to know other society from within.

Fellowships

Postgraduate Medical & Dental Practice

Fellowships offer opportunities to develop professional skills and competencies.

1-3 years

Certificate of achievement

New

Taught in English

Basics of Lithuanian language included

Why study Postgraduate Fellowships at LSMU ?

Fellowship + Lithuanian language exam → Residency;

Continue your education by entering residency programme;

Part of residency is credited from Fellowship;

Clinical skills developed in University hospital in "Kauno klinikos" (<http://www.kaunoklinikos.lt/>);



Fellowship Programmes

Cardiac, Thoracic and Vascular Surgery (Cardiothoracic and/or Cardiovascular Surgery)

Cardiac Anaesthesiology and Intensive Care

Cardiology

Neurosurgery

General Endocrinology

Diabetology

Pulmonology

General Psychiatry

Orthopaedics

Radiation Oncology

Dermatovenereology

Hematology

Radiology

Family Medicine

Rheumatology

Pediatric Urology (Pediatric Surgery)

Allergology and Clinical Immunology

Ophthalmology

Orthopaedic Odontology

Oral Surgery

More to come...

More about fellowships

<https://goo.gl/M14gVW>







University Hospital





The Hospital of Lithuanian University of Health Sciences "Kauno klinikos" is the largest healthcare institution in the Baltic states. The Hospital has two founders: the Ministry of Health and the Lithuanian University of Health Science. Established in 1940, the Hospital has grown into one of the most prominent hospitals in the country. Hospital of LSMU "Kauno klinikos" is dedicated to providing the highest quality healthcare to patients from all over the country and abroad.

University Hospital: Facts and Figures

-  The largest health care institution in the Baltic States
-  Established in 1940
-  Providing high-quality, accessible medical services for patients from Lithuania, EU and other countries

- 38** clinical departments
- 4** affiliated hospitals
- 8** intensive care and anaesthesiology units
- 12** diagnostic and interventional units

- 2300** hospital beds
- 20** rare disease management coordination centres

-  1200 Physicians
-  2400 Nurses
-  5000 Students
-  1000 Residents



LSMU Emergency centre



Cardiosurgery theatre



Our newly prepared detoxication facilities



Operations are streamed live to students in class

University Pharmacy

Pharmacy specialists produce individual composition of prescription medicine for patients, traditional medicine and homeopathic preparations. Pharmacy operates medical cosmetic products of industrial production line (creams, emollients and others products); cosmetic products are introduced to the European Union and may be distributed in Lithuania or beyond its borders. Pharmacy professionals advise researchers and businesses (new drug makers) about the technological capabilities of producing experimental samples of these drugs or therapeutic cosmetics, implementing extemporaneous or mass-production methods.

LINEA BASALIS



Linea Basalis emollients are designed by the dermatologists and pharmacists of Lithuanian University of Health Sciences. Creams soften and hydrate the skin, and the formula is reliable for whole family. It does not contain parabens, colorants or synthetic fragrance. Using creams along with other medicated creams or ointments provides pleasant sensation of the skin. It is recommended for complete body care (Basic moisturizer Cream, Olive nourishing Cream, Cannabis nourishing Cream, and Lavandula nourishing Cream) and face and T-zone skin care (Panthenol calming Cream, Cananga moisturizer Cream, Calendula moisturizer Cream and Aloe moisturizer Cream).



Pharmacy students' practice

Fifth-year pharmacy students develop their first practical skills in our own pharmacy. In addition, every year foreign students from all over the world arrive to practice here.



Industrial production

Pharmacy runs industrial production line of emollients, cosmetics under international requirements of Good Manufacturing Practice. The products are notified in the European Union and are distributed in Lithuania and foreign market.



Special Herbal Tea line

Our special production is Herbal Tea line. The formula of these products are mostly traditional; the new ones are designed by pharmacists and scientists from our university.

Animal clinics



Large Animal Clinic of Veterinary Academy

Large Animal Clinic services include research and teaching duties, as well as clinic responsibilities. Veterinarians from Veterinary Faculty are ones of the most skilled and experienced clinicians available. Providing services ranging from simple services and soundness evaluations to the most complex surgeries needed, Large Animal Clinic can fulfil all equine and livestock needs. Our team of veterinarians provides emergency assistance for horses (colic cases, traumatic or extra clinical help), for cattle (calving helping, Caesarean sections, left or right displaced abomasum operations, etc.) or small ruminants and swine. We perform various routine examinations or surgical operations in clinic or on farms with mobile veterinary service. Students and residents have opportunity to be permanent

assistants for veterinarians of Large Animal Clinic during a wide range of different services, such as feeding and veterinary consultations, oestrus synchronization protocols on farms (including pregnancy detection by ultrasound), farm management projects, horse rehabilitation procedures and other veterinary services. In addition, veterinarians and farmers are provided with consultations related to animal welfare, nutrition and reproduction. We use the most advanced and innovative technology. Large animal clinic is involved in various research projects, and it organises practical workshops for veterinarians.



We offer a wide range of different services for all kinds of animals (horses, cattle and small ruminants), which are patients of Large Animal Clinic, such as routine veterinary service or emergency help in Clinic or on farms.

Small Animal Hospital of Dr. L. Kriaučeliūnas

Small Animal Clinic of Dr. L. Kriaučeliūnas was established in 1996 by the foundation of Dr. L. Kriaučeliūnas who was a student of Lithuanian Veterinary Academy in 1940-1944.

Veterinary medicine students of Veterinary Faculty, residents and PhD students have lectures and improve their practical skills in Small Animal Clinic of Dr. L. Kriaučeliūnas every day. Clinic participates in various international exchange and science programmes. Small Animal Clinic of Dr. L.

Kriaučeliūnas organises practical teaching seminars for Veterinary medicine practitioners and students. Our Veterinary Clinic offers compassionate and professional service, providing superior animal health care for pets every hour of every day. Professional veterinary team on duty provides therapeutic, surgical, emergency, diagnostic imaging, laboratory and other services. Also, there are spacious intensive care, inpatient units and Veterinary Pharmacy.



Our pets wait for us, bring a smile or a tear on our faces, provide warmth and comfort and teach us patience, dedication, diligence, compassion and responsibility. They help us become better.



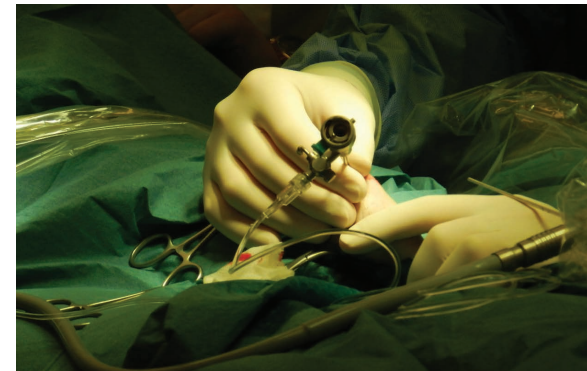
Our services

- Emergency and critical care
- Inpatient unit (cats and dogs)
- Isolation wards (cats and dogs)
- Veterinary pharmacy



Preventive care

- Wellness and vaccination programs
- Microchip pet identification and registration
- Flea and tick control
- Preventive medicine



Treatment service

- Internal medicine
- Surgery
- Arthroscopy
- Cardiology
- Traumatology and orthopaedics
- Ophthalmology
- Obstetrics - gynaecology
- Dermatology
- Dentistry and oral surgery



Diagnostics

- X - ray
- Electrocardiography
- Ultrasonography
- Otoscopy
- Ophthalmoscopy
- Laboratory examination

Innovations and Entrepreneurship Centres

LSMU conducts research in biomedical sciences, agriculture, humanities and social sciences, the results of which are published in high ranking international journals and implemented in practice, prepares researchers in biomedicine and agriculture, performs research on demand of economic entities and takes part in international projects. Together with other Lithuanian higher education institutions and companies, LSMU has developed two integrated centres (valleys) of science, studies and business: Santaka Valley and Nemunas Valley operate on open access principle and offer wide possibilities for viable cooperation between Lithuanian and foreign scientists as well as entrepreneurs and other business people.

Santaka Valley

The Centre for the Advanced Pharmaceutical and Health technologies Santaka established in 2014 is a modern six storey laboratory facility for fundamental and applied biomedical research, R&D and business orders. The main aim of the Centre is development of science and business cooperation in the pharmaceutical and health technologies sectors.

FACULTY OF PHARMACY:

- **Department of Drug Technology and Social Pharmacy** performs physical and chemical research of semi-solid drug carrier forms in order to determine the optimal characteristics for drug carriers and evaluate their influence on the kinetics of drug release.
- **Department of Clinical Pharmacy (with laboratory of Pharmaceutical technology)** specialises in research of the clinical aspects of safe and efficient application of medicinal products.
- **Department of Drug Chemistry** performs synthesis, analysis and investigation of the action of biologically active compounds in living organisms.
- **Department of Analytical and Toxicological Chemistry** promotes the development of modern analytical methods in toxicology, pharmacokinetics and quality assessment of natural herbal substances; develops chemical analysis methods for scientific and industrial use as well as for the analysis of impurities, metabolites and other toxins of various origin.
- **Department of Pharmacognosy (with laboratory of Phytopharmacy)** carries out scientific and applied research in determining the diversity in chemical composition of plants and medicinal plant raw materials.



Santaka Valley

INSTITUTE OF CARDIOLOGY:

- **Laboratory of preclinical drug investigation** does practical tests of new drug forms, technologies and methods, which are necessary for the development of new treatment methods and new products.
- **Laboratory of Medical target histopathological** research employs all modern in situ molecular research technologies for biological tissues.

INSTITUTE OF NEUROSCIENCE:

- **Laboratory of drug metabolism and pharmacological regulation of pathological processes** investigates effects of medicines and other potential pharmacological substances on functions of experimental animal organs, tissues, cells and organelles, evaluating molecular mechanisms of their action in various pathologies as well as testing possible toxic effects of the studied materials on cells and subcellular components. Various methods of biochemistry, molecular biology, proteomics and molecular toxicology are applied.

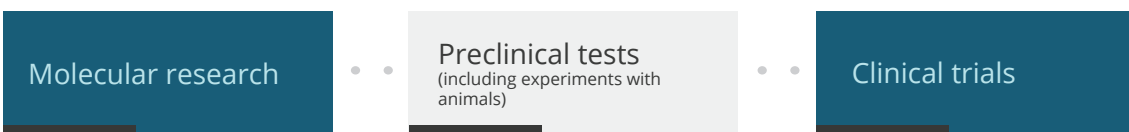


Science Valley "Nemunas"

Science Valley "Nemunas"

Nemunas valley is comprised of two open access research centres: Animal Nutrition and Biotechnology and Animal Health and Raw Material of Animal Origin Quality.

LSMU provides all types of research services related to:



The Animal Nutrition and Biotechnology Centre aims at developing animal nutrition related research and biotechnology in order to be competitive in animal husbandry, keeping it open to livestock farming innovations and providing consumers with safer and higher quality products. The main activities of the Centre are focused on optimisation of farmed animals nutritional processes and analysing feed conversion ration issues, carrying on the feed quality research with thorough assessment of the feed production technology impact and studying the effects of foods and food constituents on gene expression (nutrigenomics), which is closely related to the search for optimal animal nutrition norms. The Centre offers recommendations for farmers, large farms and scientists on animal feed, fodder production, safety and quality improvement issues.

The Centre of Animal Health and Raw Materials of Animal Origin Quality deals with the R&D in the field of contagious

animal disease epidemiology, etiopathogenesis, treatment and prophylaxis. Its activities result in production of high quality, safe and healthy animal food raw materials.

The key activities of the Centre include safe and sustainable application of disease prevention and treatment measures, highly controlled animal breeding and raw material quality assessment.

The Centre of Animal Health and Raw Materials of Animal Origin Quality carries out essential virological, microbiological, parasitological and other studies. High-level specialists of the areas mentioned above conduct research of common human and animal diseases threatening contamination of animal food products. The Centre also accumulates and preserves cultivated and control strains of microorganisms used for scientific research projects and quality control purposes.

Contact desk and queries:

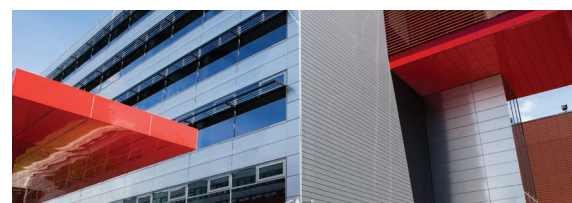
Development Department
Email: apc@lsmuni.lt
Tel. No. +370 37 361805

Open Access Centres

The following outsourcing services are provided by the departments of the open access centres of Nemunas and Santaka Science Valleys

Feed digestibility in vitro and nutrient metabolism tests
Cryopreservation of livestock/animal semen
Scientific research on emissions, behavior, physiology and health, productivity
Sires semen quality evaluation (fresh or cryopreserved)
Professional sampling of preserved (ensiled) feed produced by agricultural economic entities (farmers or agricultural companies), as well as other feeds and primary preparation of samples for laboratory testing
Tests on phylogenetic zoonotic agents to achieve pathogenic bacteria typing at genome level; research and analysis of pathogen gene expression
Identification of secondary fermentation (aerobic stability) of preserved-ensiled feed which can be the basis for assessment of duration of the feed quality preservation
Epizootiological, population control and phylogenetic studies of parasitic helminths and zoonosis
Qualitative and quantitative testing of greenhouse effect gas emissions related to preserved feed
Detection, morphological investigation and identification of parasitic organisms
Genotyping Campylobacter by MLST (multilocus sequence typing) method
Protein excretion, identification and analysis
Drug-residue identification in animal raw material and food
Microscopic image analysis
Feed raw material quality tests
Blood biochemical tests
Optimized animal and bird feed formulation.
Studies of birds, pigs, rabbits and fish gastrointestinal physiology
Quality studies of animal products (poultry, eggs, pork, rabbit, fish)
Determining crude fat content in feed
Determining of crude fiber content in feed of plant origin
Determining of protein content in feed by the Kjeldahl method
Measurement of carbohydrate content (sugar, starch)
Measurement of moisture of different samples

Quality control of herbal pharmaceuticals
Developing new and optimizing existing analytical methods for legal approval
Determination of therapeutically active analytical markers in herbal materials for quality control
Quantitative and qualitative analysis of impurities in herbal materials and herbal products
Research on joint cartilage engineering using synthetic matrices
Preclinical trials for newly developed drugs
Research on artificial heart valve engineering using synthetic matrices
Tissue preparation using immunohistochemical reactions for morphometric analysis
Evaluation of biomarkers expression in immunohistochemical reactions, morphometric evaluation and full analysis scale
Preparation of tissues for microscopic and morphometric analysis in hybridization reactions
Evaluations of biomarkers expression
Research on pharmacological and chemical materials cytotoxicity (neurotoxicity)
Research of cell antioxidation system and its modulation with potential medical preparations and food supplements
Biopharmaceutical testing and evaluation of dosage forms.
Development and stability testing of peptide and protein drug forms
Research of drug absorption through/into skin
Laboratorial analysis of creams and ointments
Research and analysis of physical and chemical properties of polymeric materials.
Determination and analysis of tablet solubility, hardness and friability
Production of extracts
Qualitative and quantitative analysis of drug substances
Pharmacokinetic research
Development of HPLC analytical methods for herbal material and herbal drugs
Analysis of biologically active compounds
Synthesis of biologically active compounds
Quantitative and qualitative evaluation of organic solvents, volatile poisonous materials, pesticides
Validated HPLC analysis of various samples
Quality analysis of various samples by HPLC methods



Open access research facility in Kaunas

Clinical Achievements

First in man ablation of atrial fibrillation using laser wire catheter

In 2014, in the Electrophysiology laboratory of LSMU hospital "Kauno klinikos", first in man ablation of paroxysmal atrial fibrillation using laser wire catheter was performed. It was the first procedure in the world using "Lasso" type single-shot laser beam catheter, which was different from usually used visually guided laser balloon point by point ablation.

Five patients suffering from recurrent paroxysmal atrial fibrillation were selected for pulmonary vein isolation procedure in the hospital of Lithuanian University of Health Sciences "Kauno klinikos", since conventional medical treatment was ineffective. In all of them there were no signs of significant structural heart disease, the arrhythmia was determined by the "electronic" defect, which could be removed by catheter ablation. The cornerstone of the procedure is an electrical isolation of connection of pulmonary veins to the left atrium. It is usually done using radiofrequency energy (high temperature), cryoenergy (cold exposure) and sometimes with the use of focused ultrasound or laser balloon point by point ablation.

The company VIMECON (Germany) has elaborated a fundamentally new technological solution for fast and safe isolation of the pulmonary veins: fiber-optic catheter containing a special fibers transmitting laser beam energy. During the exposure, tissue is heated by a laser beam on the entire line from the catheter loop.



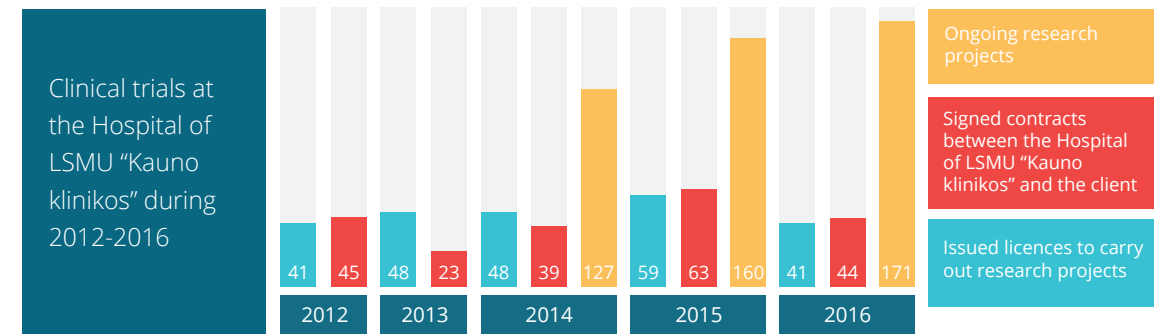
Hospital of LSMU "Kauno klinikos" initiated and ongoing clinical trials

The fundamental and applied research data provide a possibility to create new knowledge for the improvement of both human and animal health and life quality, elaborate new principles of health care politics, strengthen evidence based teaching for university students and educate society.

2. To prepare the highest level scientists and facilitate the growth of their scientific competence;
3. To empower internationalisation of research and integration into the European Research Area;
4. To develop research to business links and increase the commercialisation of research results;
5. To conduct educational activities, popularising science and increasing the prestige of science and its visibility.

RESEARCH TASKS

1. To create and develop infrastructure of modern fundamental and applied research and use it rationally;



Main clinical trial sponsors in 2014-2015



Leading Areas of R&D

We share a few stories of our greatest work. These stories are brought to you by the professionals themselves who are directing our research and development institutes.



Rimantas Benetis, Prof.
Director of the Institute of Cardiology

Institute of Cardiology

The Institute of Cardiology at Lithuanian University of Health Sciences is the chief Lithuanian research institution dealing with topical issues in cardiology. It was founded in 1969 to provide research based knowledge for prevention, diagnostics and treatment of ischemic heart disease. Research fields cover basic, clinical and epidemiological cardiology. The Institute of Cardiology focuses on:

- *assessment of the prevalence of cardiovascular diseases and their risk factors, studying their natural history and related mortality;*
- *development of new methods of prevention, diagnosis, treatment, and rehabilitation of the cardiovascular patients and estimation of the effectiveness of these procedures and interventions;*
- *investigation of regulatory mechanisms of the cardiovascular system and their impact for pathological processes.*



Rasa Verkauskienė, Prof.
Director of the Institute of Endocrinology

Institute of Endocrinology

Institute of Endocrinology of the Medical Academy of Lithuanian University of Health Sciences was established in 1978; it has been a part of the current Medical Academy of Lithuanian University of Health Sciences since 1994.

The principal aim of IE is to carry out fundamental, clinical and epidemiological research in the field of endocrine pathology and act as a scientific base for doctoral studies of PhD students, as well as improvement of scientific competence for academic personnel at LSMU.

The institute consists of two laboratories: diabetes and general endocrinology. The major activities cover fundamental and clinical research in the field of biomedical sciences, including Biology (B01) and Medicine (B06).

The scope of current scientific work focuses on the following directions:

1. *Investigation of environmental and genetic factors in predicting human reproductive health;*
2. *Investigation of molecular mechanisms and clinical features of neuroendocrine regulation and its disorders;*
3. *Registry of patients with diabetes, the impact of immune, genetic and environmental factors on the disease aetiology, prevention and treatment strategy.*



Narseta Mickuvienė, MD, PhD
Director of Behavioral Medicine Institute

Institute of Behavioral Medicine

Behavioral Medicine Institute is a research institution with great expertise in cardiovascular rehabilitation, cardiovascular prevention, psychophysiology, biological psychiatry, behavioral and sleep medicine. The Institute initiates long-term fundamental and applied sciences as well as develops experimental research work and clinical practice in the hospital of the Institute. The main areas are cardiovascular behavioral medicine, cardiovascular psychophysiology, medical and psychosocial rehabilitation, and prevention of mental disorders.

The main priorities of the research include studies on the influence of complex environmental factors, inflammatory, hormonal and genetic markers to the severity and outcomes of cardiovascular diseases, the course of rehabilitation, patients-centered long-term outcomes and quality of life. The complex interdisciplinary research combines different fields, such as cardiology, endocrinology, neuropsychology, physical therapy and curortology.



Arimantas Tamašauskas, Prof.
Director of the Institute of Neurosciences

Institute of Neurosciences

Neuroscience Institute of Lithuanian University of Health Sciences was established in 2011. It is the only specialised neuroscience institute in Lithuania which deals with topical issues in basic, applied, and clinical research in various areas of neuroscience. The mission of the Institute is to investigate the mechanisms of nervous system diseases, to search for new biomarkers for diagnosis and prognosis of nervous system diseases, and to transfer currently available knowledge of basic sciences into clinical practice. All research activities in the Institute are focused upon elaboration and improvement of prognostic and therapeutic strategies.



Violeta Juškienė, PhD.
Director of the Institute of Animal Science

Institute of Animal Science

The Animal Science Institute is a scientific institute which was established in 1952 for the fundamental and applied research in zootechny and biology on international and national level in the field of agricultural and biomedical sciences. The research is conducted by seven divisions (Department of Animal Breeding and Genetics, Department of Animal Nutrition and Feedstuffs, Department of Animal Reproduction, Department of Ecology, Analytical laboratory, Coordinating Centre for Farm Animals Genetic Resources and Department of Farm Management). The main research activities of the Institute include the studies of animal breeding, biology of reproduction and genetic resources; the studies of animal nutrition and production quality; and the studies of animal welfare and environmental issues related to animal production. Also, Institute coordinates the Programme for Conservation of farm Animal Genetic Resources in Lithuania, as well as the accumulation, investigation, preservation and use of genetic resources and gene bank. The scientists take active part in different international and national programmes, the activities of the research integrate science, studies and business centre "Nemunas" and work in close collaboration with business partners and farmers.

International Cooperation



- LSMU Health Research Institute is WHO Collaborating Centre for the Prevention & Control Noncommunicable Diseases;
- The main objectives of the Centre are the following: biomedical and social sciences research, training of scientists and provision of expert services of the highest level which form and implement country and regional common health policies;
- LSMU Faculty of Nursing is WHO Collaborating Centre for cooperation in the Central Asian region.



- LSMU takes part in the Nordplus Higher Education Programme. Nordplus offers possibilities for students, teachers and other staff from the Nordic and Baltic countries to cooperate with each other in the field of education;
- In Nordplus Higher Education, cooperation on student and teacher mobility is organised in academic networks. LSMU participates in 6 Nordplus networks in the fields of Dentistry, Nursing, Veterinary Medicine and Public Health.



- International mobility of students, teachers and staff is one of the key elements of internationalisation at LSMU. Erasmus+ is the largest EU mobility programme for education, training, youth and sport aiming to boost the skills and employability of university students by taking studies abroad for between 3 and 12 months. LSMU is taking part in Erasmus since 1999 and collaborates with more than 150 partner universities.



Cooperation with CIS

- Kazakhstan
- Uzbekistan
- Tajikistan
- Ukraine
- Belarus
- Moldova
- Azerbaijan
- Georgia
- Armenia

COOPERATION WITH REPUBLIC OF KAZAKHSTAN

- LSMU has cooperated with Kazakhstan since 2006
- 16 memorandums of cooperation;
 - 112 bilateral cooperation agreements;
 - 5 conferences organised by LSMU;

- Kazakhstan President's Bolashak international scholarship fund included LSMU to its best institutions list for financed training programmes (Master, PhD, internships) abroad;
- 21 Kazakhstan President's Bolashak international scholarship fund fellows worked as trainees at LSMU;
- 3 PhD students from Kazakhstan began doctoral studies at LSMU;
- 15 LSMU professors consulting doctoral students from Kazakhstan;
- LSMU initiated the association of Lithuanian universities to work together in Kazakhstan;
- 100 LSMU experts conducted the mentoring and master classes in Kazakhstan during 2012-2016;
- 321 incoming trainees from Kazakhstan during 2012-2016.



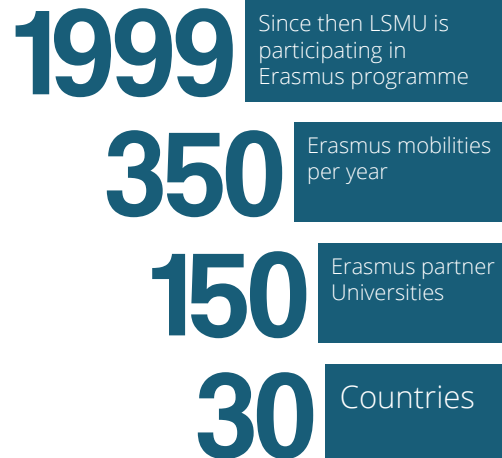
Our strong partnerships create a bigger business market in the whole world

Erasmus+

Erasmus+ is the European Union's exchange programme for students and staff. Erasmus+ offers a possibility of studying at a partner higher education institution or undertaking a traineeship abroad for 2 months, a semester, or even a year as part of your degree at LSMU.

Erasmus+ benefits:

- development of personal and professional competences ,
- strengthening social skills,
- enhancement of employability,
- improvement of language skills,
- expansion of cultural awareness.



Erasmus+ Global Mobility

Since 2014 Erasmus+ has not been only about Europe or Europeans - with Erasmus+, people from all over the world can seize opportunities. LSMU is organising student and staff mobility with non-European partner universities in these countries:

- | | | |
|-----------|------------|------------|
| Australia | USA | Lebanon |
| Israel | Ukraine | Tajikistan |
| Moldova | Kazakhstan | Serbia |

Students about Erasmus+



Gintarė Vaičiaitė

4th year student in the Faculty of Medicine
Università degli Studi di Perugia, Italy

“ Erasmus+ is a unique way to experience yourself as a member of multicultural environment. This program gave me an ability to find out more about other cultures, other countries, learning types. Living abroad by yourself is quite big step forward, but it teaches you lots of things and grows your personality. My Erasmus+ experience was full of great moments, close persons that I met, new cities that I visited, new language that I learnt. But the most important thing that I got from it was the freedom to put myself out for the world, to overcome my fears and discover the amazing things that were waiting every step on the way.



Agnė Pašvenskaitė

residency student in Otorhinolaryngology
Instituto Português de Oncologia do Porto, Portugal

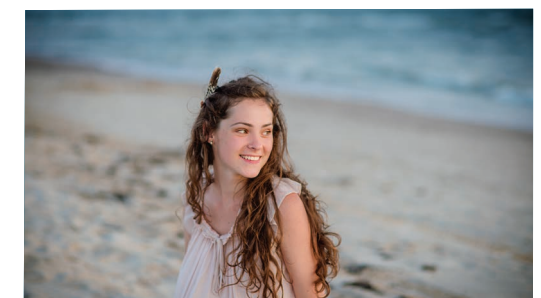
“ Erasmus is an opportunity to see how wide and friendly the world is. All the people you meet, all the countries you visit, and all the thoughts you share during the programme make you more open minded, courageous, free and flexible. If you are not afraid of challenges - go and do Erasmus! It might be the best thing to happen in Your life and I am sure it can change it.”



Austėja Degutytė

graduate student from the Faculty of Veterinary
EquiTom Equine Clinic, Belgium

“ Erasmus - should be on every students' "bucket list". It is an unique way to experience the World and find your spot in it. Erasmus is Real Life!



Rūta Lukoševičiūtė

2nd year student in the Faculty of Public Health
Mälardalen Högskola, Sweden

“ Erasmus is not just having amazing adventures with new people from all over the world, but also the opportunity to take a look in your professional studies in different way.

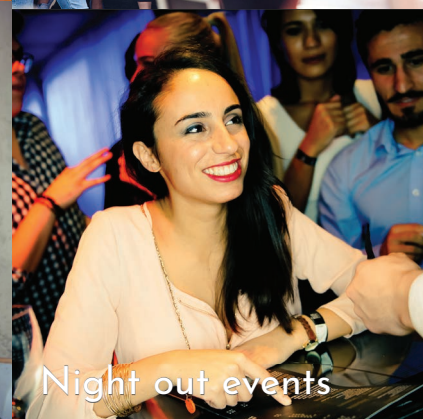
Division of Academic Mobility
Email: mobility@lsmuni.lt



Open days

September 1st

Night out events



Food festival

Night out events



Flea market

International day



Erasmus days

Dance competition

A good rest is essential after a hard work; so, here you can have a complete rest in a good environment and with people around you



Cultures without borders



LITHUANIAN UNIVERSITY OF HEALTH SCIENCES

A. Mickevičiaus 9, LT-44307 Kaunas

fstudent@ismuni.lt